



ES

SPAIN

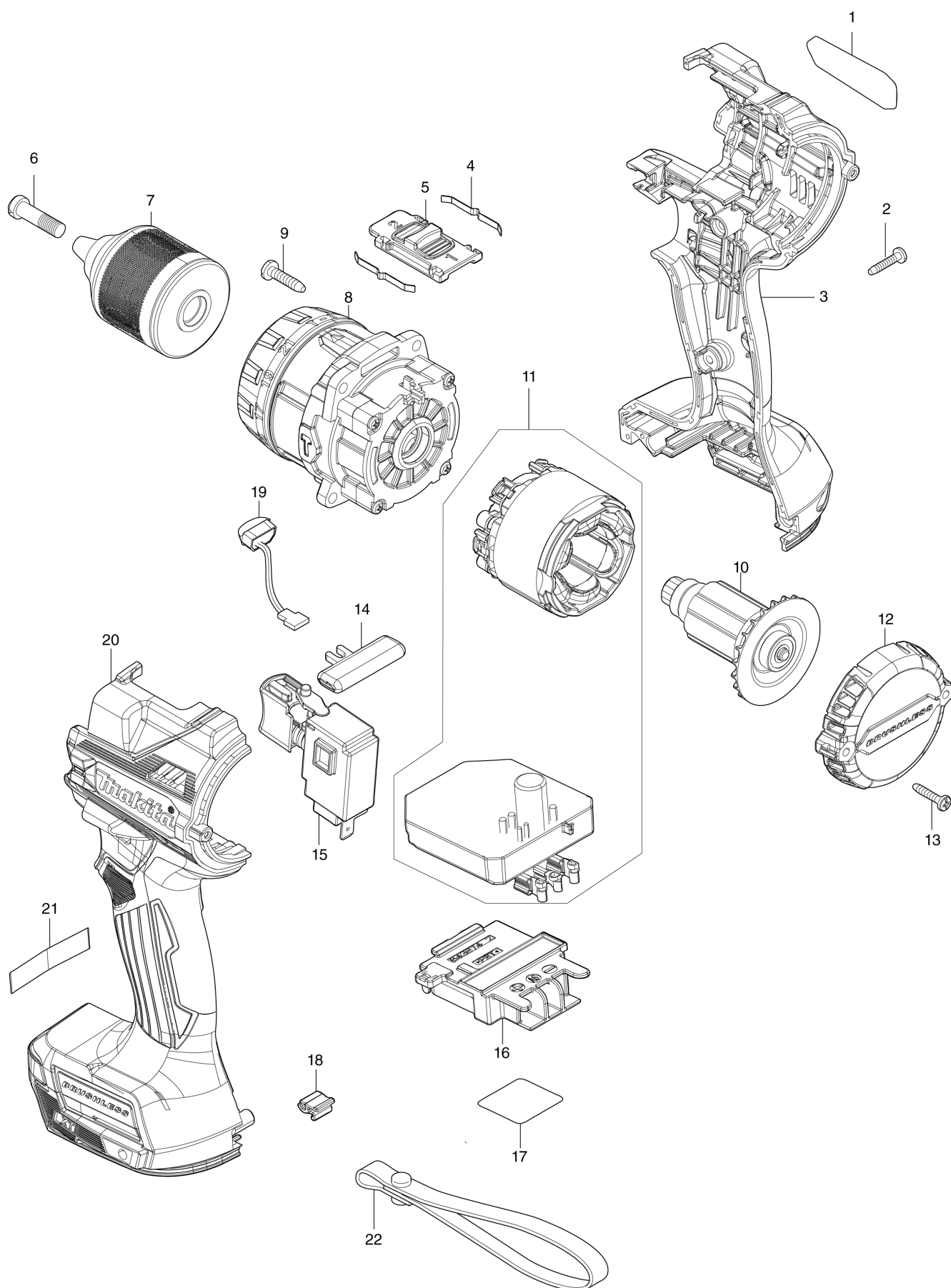
Diagram / Parts List

DHP486

CORDLESS HAMMER DRIVER DRILL



(ES) DHP486 / CORDLESS HAMMER DRIVER DRILL



ES

SPAIN

DHP486 / CORDLESS HAMMER DRIVER DRILL

| Item | Sub | Parts No. | Parts Description | Qty | I/C | E/C No. | Close No. | Remark |
|-------|-----|-----------|--------------------------------|-----|-----|---------|-----------|--------|
| 001 | | 811B29-1 | DHP486 NAME PLATE | 1 | | | | |
| 002 | | 266130-9 | TAPPING SCREW BIND PT 3X16 | 7 | | | | |
| 003 | | 183R83-4 | HOUSING SET | 1 | | | | |
| | C10 | 263005-3 | RUBBER PIN 6 | 2 | | | | |
| | C20 | 252126-6 | HEX. LOCK NUT M4-7 | 2 | | | | |
| | D10 | | INC. 20 | | | | | |
| 004 | | 232220-0 | LEAF SPRING | 2 | | | | |
| 005 | | 127494-5 | SPEED CHANGE LEVER ASSEMBLY | 1 | | | | |
| | C10 | 233438-6 | COMPRESSION SPRING 4 | 2 | | | | |
| 006 | | 251468-5 | - FLAT HEAD SCREW M6X22 | 1 | | | | |
| 007 | | 763252-1 | KEYLESS DRILL CHUCK 13 | 1 | | | | |
| 008 | | 127698-9 | GEAR ASSEMBLY | 1 | | | D8710 | |
| 008-1 | | 122A92-6 | GEAR ASSEMBLY | 1 | < | D8710 | DC643 | |
| 008-2 | | 122B68-9 | GEAR ASSEMBLY | 1 | < | DE859 | | |
| 009 | | 266326-2 | TAPPING SCREW 4X18 | 4 | | | | |
| 010 | | 619656-4 | ROTOR | 1 | | | | |
| 011 | | 629A33-8 | STATOR COMPLETE | 1 | | | DG045 | |
| 011-1 | | 629B79-0 | STATOR COMPLETE | 1 | O | DG045 | | |
| 012 | | 413405-9 | REAR COVER | 1 | | | | |
| 013 | | 266130-9 | TAPPING SCREW BIND PT 3X16 | 2 | | | | |
| 014 | | 419041-9 | F/R CHANGE LEVER | 1 | | | | |
| 015 | | 651443-5 | SWITCH C3JR-4B | 1 | | | | |
| 016 | | 643874-2 | TERMINAL | 1 | | | | |
| 017 | | 811B36-4 | DHP486 SERIAL NO. LABEL | 1 | | | | |
| 018 | | 424517-3 | CUSHION | 1 | | | | |
| 019 | | 620549-0 | LED CIRCUIT | 1 | | | | |
| 020 | | 183R83-4 | HOUSING SET | 1 | | | | |
| | C10 | 263005-3 | RUBBER PIN 6 | 2 | | | | |
| | C20 | 252126-6 | HEX. LOCK NUT M4-7 | 2 | | | | |
| | D10 | | INC. 3 | | | | | |
| A01 | | 122576-8 | STOPPER POLE ASS'Y | 1 | | | | |
| A02 | | 127701-6 | GRIP ASSEMBLY | 1 | | | DB452 | |
| | C10 | 140U91-6 | POLE COMPLETE | 1 | | | DB452 | |
| | C20 | 140X19-2 | ARM R COMPLETE | 1 | | | DB452 | |
| | C30 | 265785-7 | THUMB SCREW M5X10 | 1 | | | DB452 | |
| | C40 | 266886-4 | HEX. BOLT M8X65 | 1 | | | DB452 | |
| | C50 | 312A63-3 | ARM L | 1 | | | DB452 | |
| | C60 | 931202-6 | HEX. NUT M5 | 1 | | | DB452 | |
| | C70 | 962055-2 | RETAINING RING (INT) R-15 | 1 | | | DB452 | |
| A02-1 | | 122C01-7 | GRIP ASSEMBLY | 1 | < | DB452 | DE160 | |
| | C10 | 140U91-6 | POLE COMPLETE | 1 | | DB452 | DE160 | |
| | C20 | 140X19-2 | ARM R COMPLETE | 1 | | DB452 | DE160 | |
| | C30 | 265785-7 | THUMB SCREW M5X10 | 1 | | DB452 | DE160 | |
| | C40 | 266886-4 | HEX. BOLT M8X65 | 1 | | DB452 | DE160 | |
| | C50 | 312C73-2 | ARM L | 1 | | DB452 | DE160 | |
| | C60 | 931202-6 | HEX. NUT M5 | 1 | | DB452 | DE160 | |
| | C70 | 962055-2 | RETAINING RING (INT) R-15 | 1 | | DB452 | DE160 | |
| A02-2 | | 122D10-2 | GRIP ASSEMBLY | 1 | O | DE160 | | |
| | C10 | 140U91-6 | POLE COMPLETE | 1 | | DE160 | | |
| | C20 | 140X19-2 | ARM R COMPLETE | 1 | | DE160 | | |
| | C30 | 265C34-0 | THUMB SCREW M5X10 | 1 | | DE160 | | |
| | C40 | 266886-4 | HEX. BOLT M8X65 | 1 | | DE160 | | |
| | C50 | 312C73-2 | ARM L | 1 | | DE160 | | |
| | C60 | 931202-6 | HEX. NUT M5 | 1 | | DE160 | | |
| | C70 | 962055-2 | RETAINING RING (INT) R-15 | 1 | | DE160 | | |
| A03 | | 251314-2 | + SCREW M4X12 | 2 | | | | |
| A04 | | 346317-0 | HOOK | 1 | | | | |
| A05 | | 452947-8 | BIT HOLDER | 1 | | | | |
| A06 | | 784637-8 | +/- BIT 2-45 | 2 | | | | |
| A07B | | 821550-0 | CONNECTOR PLASTIC CASE (TYPE2) | 1 | | | | |
| | C10 | 453974-8 | LATCH | 4 | | | | |
| A08B | | 837916-4 | INNER TRAY | 1 | | | | |
| A09B | | 8030X6-3 | DHP486RTJ INDICATION LABEL | 1 | | | | |
| A10B | | 8030X7-1 | DHP486RTJ PLASTIC CASE LABEL | 2 | | | | |
| A11B | | 450128-8 | BATTERY COVER | 1 | | | | |

B:DHP486RTJ(H)

Interchange

O : Yes

X : No

< : the new part can be substituted for the current.

> : the current part can be substituted for the new.

S : Interchangeable as a set.

SPAIN

[illegible]

Interchange
O : Yes
X : No
< : the new part can be substituted for the current.
> : the current part can be substituted for the new.
S : Interchangeable as a set.