



MX

MEXICO

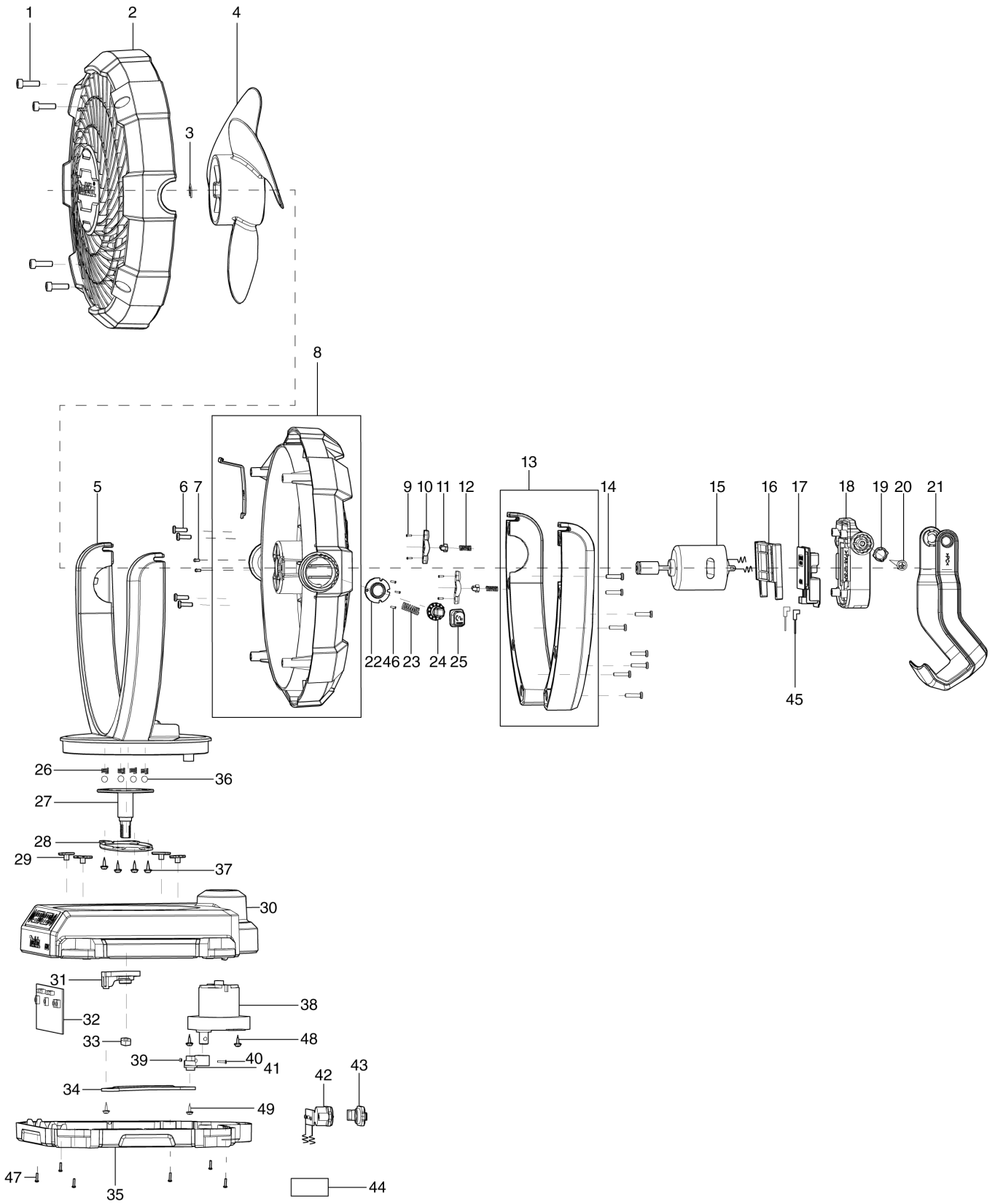
Diagram / Parts List

DCF102

CORDLESS FAN



(MX) DCF102 / CORDLESS FAN



MX	MEXICO
-----------	---------------

DCF102 / CORDLESS FAN

Item	Sub	Parts No.	Parts Description	Qty	I/C	E/C No.	Close No.	Remark
001		TE00000201	HEX TAPPING SCREW 4X14	4				
002		TE00000258	FRONT COVER OF THE BODY	1				
003		TE00000199	CIRCLIP	1				
004		TE00000186	FAN BLADE	1				
005		TE00000259	FRONT COVER OF THE STAND	1				
006		TE00000202	SCREW 3X10	4				
007		TE00000206	P.H. SCREW M3X5	2				
008		TE00000260	BACK COVER OF THE BODY	1				
009		TE00000203	SELF-TAPPING SCREW 2.5X8	4				
010		TE00000189	STOPPER SUPPORT	2				
011		TE00000190	STOPPER	2				
012		TE00000197	SPRING1	2				
013		TE00000261	BACK COVER OF THE SUPPORT	1				
014		TE00000204	SCREW 3X14	8				
015		TE00000262	MOTOR AND LEAD	1			Y08578	
015-1		TE00000510	MOTOR AND LEAD	1	O	Y08578		
016		TE00000263	CLAMPING PARTS OF BATTERY TOUCH	1				
017		TE00000313	TERMINAL	1				
018		TE00000264	THE BATTERY HOUSING	1				
019		TE00000191	STOPPER FOR HOOK AND HANDLE	2				
020		TE00000205	CROSS BELT PAD SCREWS 4X10	2				
021		TE00000265	HOOK&HANDLE	1				
022		TE00000266	HEAD-LOCK ALUMINUM PARTS1	1				
023		TE00000267	SPRING(LARGE)	1				
024		TE00000268	HEAD-LOCK ALUMINUM PARTS2	1				
025		TE00000269	HEAD-LOCK BUTTON	1				
026		TE00000270	SPRING(MIDDLE)	4				
027		TE00000271	PRINCIPAL AXIS	1				
028		TE00000272	PRESSING/FIXING PART(FOR PRINC	1				
029		TE00000089	POM PLATE	4			Y08261	
029-1		TE00000474	POM PLATE	4	O	Y08261	Y08577	
029-2		TE00000089	POM PLATE	4	<	Y08577		
030		TE00000273	UP COVER OF THE BASE	1				
031		TE00000274	SHAKE HEAD-POM 1	1				
032		TE00000275	PCB	1			Y08579	
032-1		TE00000518	PCB	1	O	Y08579		
033		TE00000276	NUT M8	1				
034		TE00000277	SHAKE HEAD -CONNECTION IRON	1				
035		TE00000278	LOWER COVER OF THE BASE	1				
036		TE00000063	STEEL BALL 6	4				
037		TE00000279	TAPPING SCREW 3X8	4				
038		TE00000280	SUB MOTOR	1			Y08772	
038-1		TE00000417	SUB MOTOR	1	O	Y08772		
039		TE00000281	NUT M3	1				
040		TE00000102	PHILLIPS HEAD SCREW M3X14	1				
041		TE00000282	SHAKE HEAD-POM 2	1				
042		TE00000283	FIXED PART OF DC BASE	1				
043		TE00000192	CHARGING SOCKET PLUG	1				
044		TE00000312	RAITING LABEL	1				
045		TE00000284	LEAD WITH INSERTING PIECE	2			Y08578	
045-1		TE00000511	LEAD WITH INSERTING PIECE	2	O	Y08578		
046		TE00000203	SELF-TAPPING SCREW 2.5X8	3				
047		TE00000204	SCREW 3X14	6				
048		TE00000279	TAPPING SCREW 3X8	2				
049		TE00000279	TAPPING SCREW 3X8	2				
050		TE00000317	SWITCH LABEL	1		Y07797		
051		TE00000515	GROMMET	1		Y08578	Y08705	
051-1		TE00000537	WIRE SHEATH RUBBER	1	O	Y08705		
052		TE00000418	CABLE TIE	1		Y08772		
053		TE00000204	SCREW 3X14	1		Y08772		

Interchange
O : Yes
X : No
< : the new part can be substituted for the current.
> : the current part can be substituted for the new.
S : Interchangeable as a set.