



MX	MEXICO
----	--------

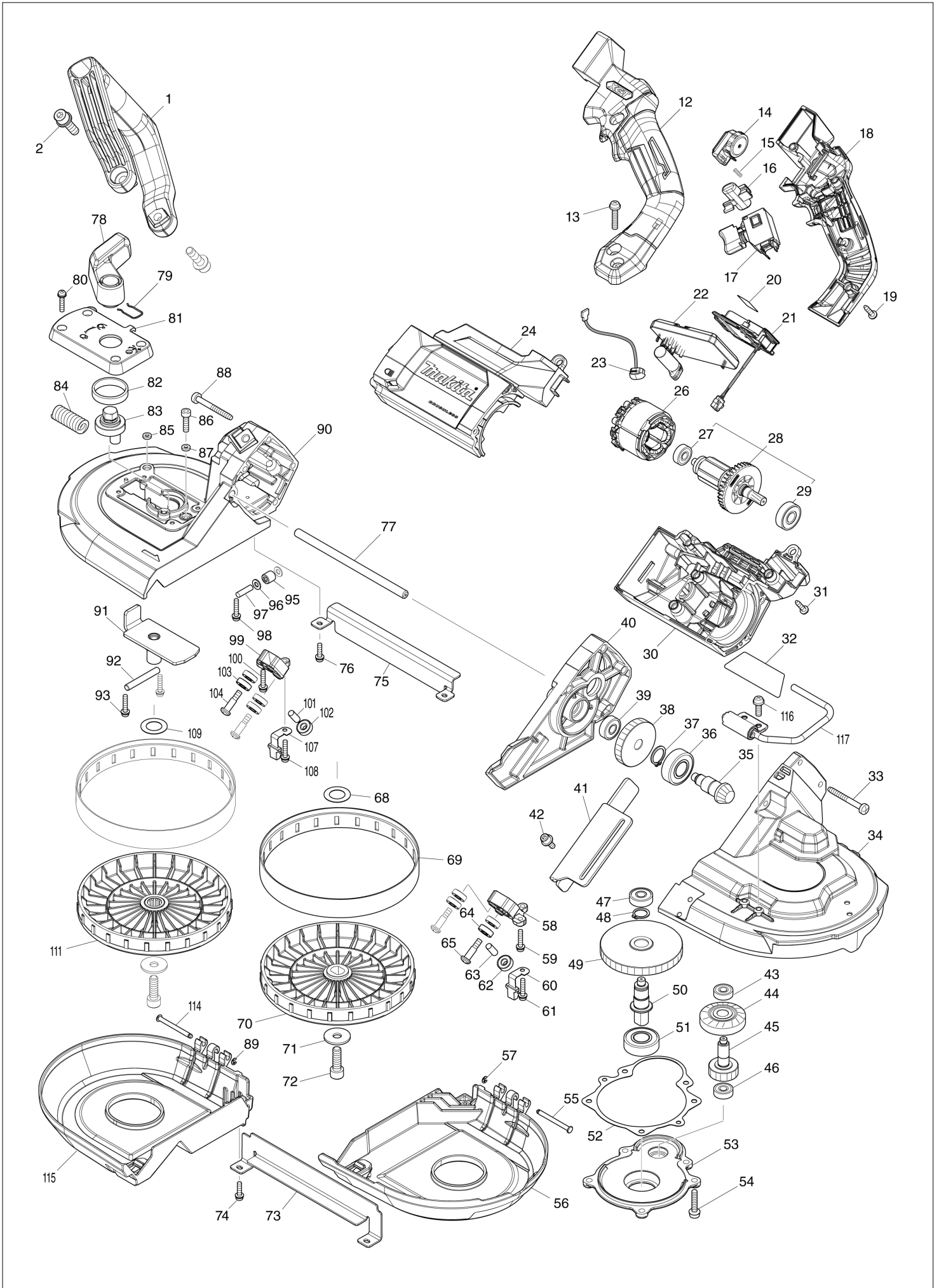
# Diagram / Parts List

**PB002G**

**CORDLESS PORTABLE BAND SAW**



(MX) PB002G / CORDLESS PORTABLE BAND SAW



MX

MEXICO

## PB002G / CORDLESS PORTABLE BAND SAW

Item	Sub	Parts No.	Parts Description	Qty	I/C	E/C No.	Close No.	Remark
001		273030-6	GRIP	1				
002		922453-2	HEX.SOCKET HEAD BOLT M8X30	2				
012		183V79-9	HANDLE SET	1				
	C10	8012U4-2	XGT LOGO LABEL	1				
	D10		INC. 18					
013		911243-8	PAN HEAD SCREW M5X25	2				
014		620A64-0	DIAL CURCUIT	1				
015		231433-0	COMPRESSION SPRING 4	1				
016		412551-5	LOCK OFF BUTTON	1				
017		651486-7	SWITCH C3JW-4B-R	1				
018		183V79-9	HANDLE SET	1				
	C10	8012U4-2	XGT LOGO LABEL	1				
	D10		INC. 12					
019		265995-6	TAPPING SCREW 4X18	4				
020		8116W3-4	PB002G SERIAL NO. LABEL	1				
021		632P49-4	TERMINAL UNIT	1				
022		620J36-9	CONTROLLER	1				
023		620549-0	LED CIRCUIT	1				
024		183V14-7	MOTOR HOUSING SET	1				
	C10	263005-3	RUBBER PIN 6	2				
	D10		INC. 30					
026		629B03-3	STATOR	1				
027		210017-7	BALL BEARING 607DDW	1				
028		519736-5	ROTOR ASS'Y	1				
	D10		INC. 27,29					
029		210141-6	BALL BEARING 6000DDW	1				
030		183V14-7	MOTOR HOUSING SET	1				
	C10	263005-3	RUBBER PIN 6	2				
	D10		INC. 24					
031		265995-6	TAPPING SCREW 4X18	4				
032		8116V7-9	PB002G NAME PLATE	1				
033		266056-5	TAPPING SCREW 5X45	4				
034		141G83-4	REAR FRAME COMPLETE	1				
	C10	263005-3	RUBBER PIN 6	1				
	C20	424736-1	SPONGE	1				
035		227930-2	SPIRAL BEVEL GEAR 11	1				
036		211487-3	BALL BEARING 6202DDW	1				
037		961055-9	RETAINING RING S-15	1				
038		227934-4	HELICAL GEAR 61	1				
039		210029-0	BALL BEARING 608ZZ	1				
040		141H06-8	GEAR HOUSING COMPLETE	1				
041		347940-4	STOPPER PLATE	1				
042		922224-7	H.S.H.BOLT M5X16 WITH WG	2				
043		210017-7	BALL BEARING 607DDW	1				
044		227931-0	SPIRAL BEVEL GEAR 29	1				
045		227932-8	SPUR GEAR 12	1				
046		210017-7	BALL BEARING 607DDW	1				
047		210029-0	BALL BEARING 608ZZ	1				
048		961054-1	RETAINING RING S-14	1				
049		227933-6	SPUR GEAR 39	1				
050		327947-6	SPINDLE	1				
051		211487-3	BALL BEARING 6202DDW	1				
052		422845-0	GASKET	1				
053		312C55-4	BEARING BOX	1				
054		911243-8	PAN HEAD SCREW M5X25	5				
055		256689-4	PIN 4	1				
056		413D72-4	REAR WHEEL COVER	1				
057		961017-7	STOP RING E-3	1				
058		312C53-8	LOWER HOLDER	1				
059		911138-5	P.H.SCREW M4X20 WITH WR	1				
060		162B33-6	HOOK	1				
061		911138-5	P.H.SCREW M4X20 WITH WR	1				
062		210187-2	BALL BEARING 696ZZ	1				
063		256033-5	PIN 6	1				
064		210187-2	BALL BEARING 696ZZ	4				

A:PB002GZ(N)  
B:PB002GM201(L)

Interchange  
O : Yes  
X : No  
< : the new part can be substituted for the current.  
> : the current part can be substituted for the new.  
S : Interchangeable as a set.

**MX****MEXICO****PB002G / CORDLESS PORTABLE BAND SAW**

Item	Sub	Parts No.	Parts Description	Qty	I/C	E/C No.	Close No.	Remark
065		251337-0	+ PAN HEAD SCREW M5	2				
068		267164-5	FLAT WASHER 15	1				
069		421333-4	RUBBER TIRE	2				
070		413D66-9	WHEEL B	1				
071		253852-0	FLAT WASHER 8	2				
072		265C56-0	H.S. HEAD BOLT M8X25	2				
073		347942-0	SAW GUARD COVER	1				
074		911128-8	P.H.SCREW M4X16 WITH WR	2				
075		347941-2	SAW GUARD	1				
076		911128-8	P.H.SCREW M4X16 WITH WR	2				
077		327948-4	GUARD ROD 8	1				
078		271470-2	LEVER 65	1				
079		231955-0	RING SPRING 12	1				
080		911138-5	P.H.SCREW M4X20 WITH WR	4				
081		413D73-2	LEVER HOLDER	1				
082		214408-4	PLANE BEARING 30	1				
083		326351-6	LEVER SHAFT	1				
084		234313-9	COMPRESSION SPRING 9	1				
085		262130-7	URETHANE RING 4	1				
086		265382-9	HEX. SOCKET HEAD BOLT M5X20	1				
087		262130-7	URETHANE RING 4	1				
088		266056-5	TAPPING SCREW 5X45	4				
089		961017-7	STOP RING E-3	1				
090		141G86-8	FRONT FRAME COMPLETE	1				
	C10	263002-9	RUBBER PIN 4	1				
	C20	263005-3	RUBBER PIN 6	1				
091		162B48-3	SLIDE PLATE	1				
092		268241-6	PIN 6	1				
093		911138-5	P.H.SCREW M4X20 WITH WR	2				
095		212199-1	NEEDLE BEARING 510	1				
096		267010-2	FLAT WASHER 5	2				
097		256155-1	PIN 5	1				
098		911138-5	P.H.SCREW M4X20 WITH WR	1				
099		312C54-6	UPPER HOLDER	1			DK021	
099-1		312C54-6	UPPER HOLDER	1	O	DK021		
100		911138-5	P.H.SCREW M4X20 WITH WR	1				
101		256033-5	PIN 6	1				
102		210187-2	BALL BEARING 696ZZ	1				
103		210187-2	BALL BEARING 696ZZ	4				
104		251337-0	+ PAN HEAD SCREW M5	2				
107		162B33-6	HOOK	1				
108		911138-5	P.H.SCREW M4X20 WITH WR	1				
109		267164-5	FLAT WASHER 15	1				
111		141G78-7	WHEEL COMPLETE A	1				
114		256689-4	PIN 4	1				
115		413D71-6	FRONT WHEEL COVER	1				
116		911223-4	PAN HEAD SCREW M5X16	2				
117		122B60-5	HOOK ASSEMBLY	1				
118		263027-3	RUBBER PIN 4	1		Y08913		
A02		783202-0	HEX. WRENCH 4	1				
A03B		***DC40RA	DC40RA FAST CHARGER	1				
	D10		COMPO-PARTS					
A04B		191B26-6	BATTERY BL4040 SET	2				
A05B		412393-7	BATTERY COVER	1				
A06B		821882-5	PLASTIC CASE	1				
	C10	162271-8	LATCH	2				
	C20	451134-6	HANDLE	1				
	C30	452875-7	SHAFT	2				
A07B		8049S3-1	PB002GM201 PLASTIC CASE LABEL	2				
A08		B-30128	BAND SAW BLADE 10TPI BIM	1		Y08778		

A:PB002GZ(N)  
B:PB002GM201(L)Interchange  
O : Yes  
X : No  
< : the new part can be substituted for the current.  
> : the current part can be substituted for the new.  
S : Interchangeable as a set.