



MX

MEXICO

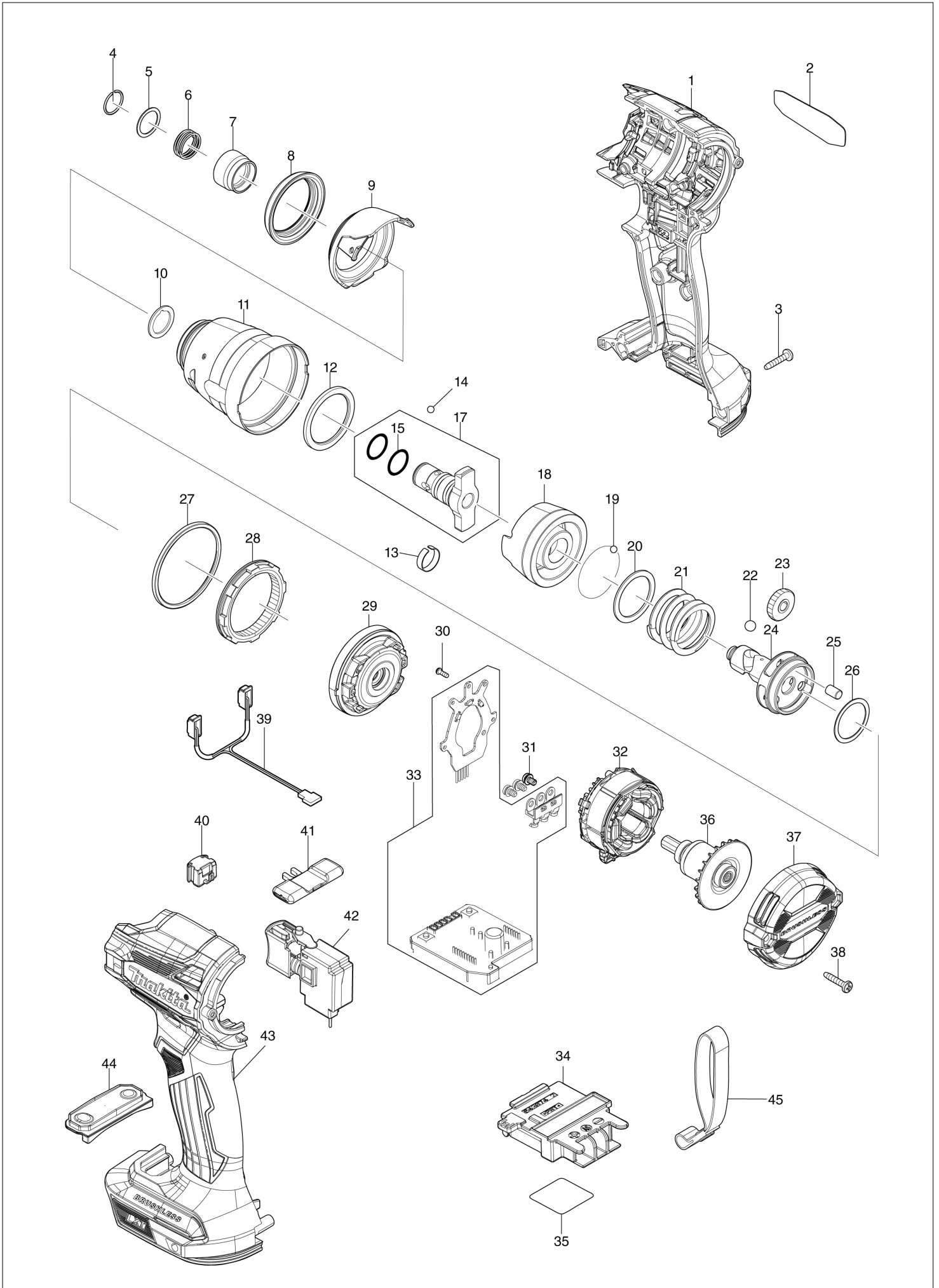
Diagram / Parts List

DTD172

CORDLESS IMPACT DRIVER



(MX) DTD172 / CORDLESS IMPACT DRIVER



MX

MEXICO

DTD172 / CORDLESS IMPACT DRIVER

| Item | Sub | Parts No. | Parts Description | Qty | I/C | E/C No. | Close No. | Remark |
|------|-----|-----------|--------------------------------|-----|-----|---------|-----------|--------|
| 001 | | 183S40-8 | HOUSING SET | 1 | | | | |
| | C10 | 263005-3 | RUBBER PIN 6 | 2 | | | | |
| | C20 | 252126-6 | HEX. LOCK NUT M4-7 | 2 | | | | |
| | D10 | | INC. 43 | | | | | |
| 002 | | 8111E5-4 | DTD172 NAME PLATE | 1 | | | | |
| 003 | | 266429-2 | TAPPING SCREW 3X16 | 7 | | | | |
| 004 | | 231952-6 | RING SPRING 12 | 1 | | | | |
| 005 | | 267101-9 | FLAT WASHER 14 | 1 | | | | |
| 006 | | 232592-3 | COMPRESSION SPRING 14 | 1 | | | | |
| 007 | | 327783-0 | BIT SLEEVE | 1 | | | | |
| 008 | | 422689-8 | BUMPER | 1 | | | | |
| 009 | | 413493-6 | HAMMER CASE COVER | 1 | | | | |
| 010 | | 253496-6 | FLAT WASHER 13 | 1 | | | | |
| 011 | | 141A40-6 | HAMMER CASE COMPLETE | 1 | | | | |
| 012 | | 261168-9 | NYLON WASHER 29 | 1 | | | | |
| 013 | | 232692-9 | LEAF SPRING | 1 | | | | |
| 014 | | 216040-0 | STEEL BALL 3.5 | 2 | | | | |
| 015 | | 213166-9 | O RING 12.5 | 2 | | | | |
| 017 | | 136519-4 | ANVIL M ASS'Y | 1 | | | | |
| | D10 | | INC. 15 | | | | | |
| 018 | | 327785-6 | HAMMER | 1 | | | | |
| 019 | | 216040-0 | STEEL BALL 3.5 | 24 | | | | |
| 020 | | 267175-0 | FLAT WASHER 24 | 1 | | | | |
| 021 | | 232459-5 | COMPRESSION SPRING 24B | 1 | | | | |
| 022 | | 216011-7 | STEEL BALL 5.6 | 2 | | | | |
| 023 | | 227350-0 | SPUR GEAR 22 | 3 | | | | |
| 024 | | 327784-8 | SPINDLE | 1 | | | | |
| 025 | | 268311-1 | PIN 5 | 3 | | | | |
| 026 | | 267283-7 | FLAT WASHER 21 | 1 | | | | |
| 027 | | 422688-0 | SEAL | 1 | | | | |
| 028 | | 227882-7 | INTERNAL GEAR 51 | 1 | | | | |
| 029 | | 141A41-4 | BEARING BOX COMPLETE | 1 | | | | |
| 030 | | 266490-9 | TAPPING SCREW PT 2X6 | 3 | | | | |
| 031 | | 652069-6 | FLAT HEAD SCREW M3X6 | 3 | | | | |
| 032 | | 629217-2 | STATOR | 1 | | | | |
| 033 | | 620E81-4 | CONTROLLER | 1 | | | | |
| 034 | | 643874-2 | TERMINAL | 1 | | | | |
| 035 | | 8111F2-7 | DTD172 SERIAL NO. LABEL | 1 | | | | |
| 036 | | 619678-4 | ROTOR | 1 | | | | |
| 037 | | 413494-4 | REAR COVER | 1 | | | | |
| 038 | | 266429-2 | TAPPING SCREW 3X16 | 2 | | | | |
| 039 | | 620F12-9 | LED CIRCUIT | 1 | | | | |
| 040 | | 632L84-8 | SWITCH UNIT | 1 | | | | |
| 041 | | 455053-8 | F/R CHANGE LEVER | 1 | | | | |
| 042 | | 651442-7 | SWITCH C3JR-1A-1 | 1 | | | | |
| 043 | | 183S40-8 | HOUSING SET | 1 | | | | |
| | C10 | 263005-3 | RUBBER PIN 6 | 2 | | | | |
| | C20 | 252126-6 | HEX. LOCK NUT M4-7 | 2 | | | | |
| | D10 | | INC. 1 | | | | | |
| 044 | | 141F68-4 | SWITCH PLATE COMPLETE | 1 | | | | |
| A01 | | 266622-8 | + TRUSS HEAD SCREW M4X12 | 1 | | | | |
| A02 | | 346449-3 | HOOK | 1 | | | | |
| A04B | | 821550-0 | CONNECTOR PLASTIC CASE (TYPE2) | 1 | | | | |
| | C10 | 453974-8 | LATCH | 4 | | | | |
| A05B | | 837670-0 | INNER TRAY | 1 | | | | |
| A06B | | 8042M5-3 | DTD172RTJ PLASTIC CASE LABEL | 2 | | | | |
| A07B | | 8042M4-5 | DTD172RTJ INDICATION LABEL | 1 | | | | |
| A08B | | 450128-8 | BATTERY COVER | 1 | | | | |
| A09B | | ***DC18RC | DC18RC FAST CHARGER | 1 | | | | |
| | D10 | | COMPO-PARTS | | | | | |
| A10B | | 197283-2 | BATTERY BL1850B SET | 2 | | | | |
| | | | | | | | | |
| | | | | | | | | |
| | | | | | | | | |
| | | | | | | | | |

B:DTD172RTJ(L)

Interchange

O : Yes

X : No

< : the new part can be substituted for the current.

> : the current part can be substituted for the new.

S : Interchangeable as a set.