



MX

MEXICO

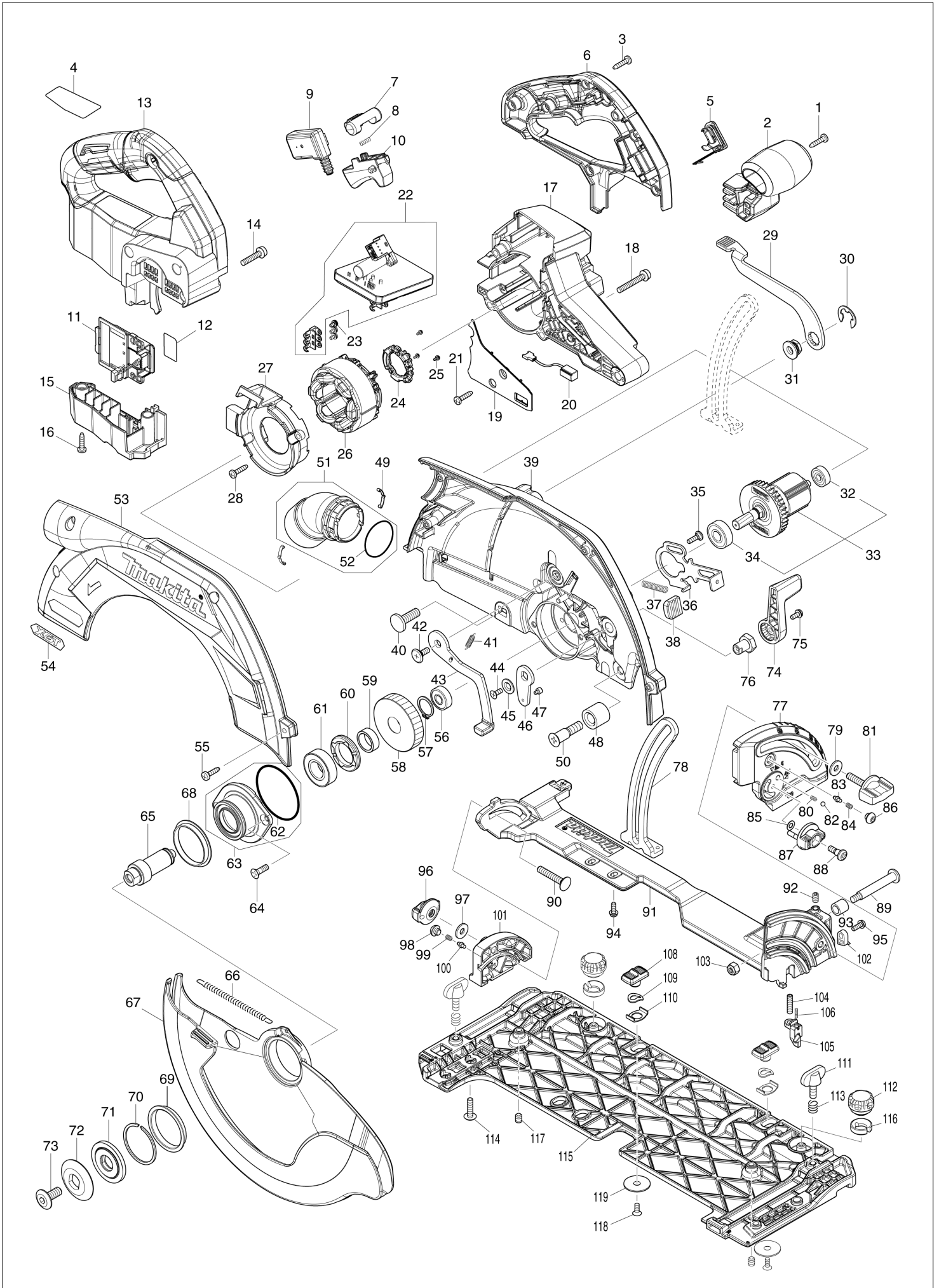
Diagram / Parts List

HS011G

260_270MMCORDLESS CIRCULAR SAW



(MX) HS011G / 260_270MMCORDLESS CIRCULAR SAW



MX

MEXICO

HS011G / 260_270MMCORDLESS CIRCULAR SAW

| Item | Sub | Parts No. | Parts Description | Qty | I/C | E/C No. | Close No. | Remark |
|------|-----|-----------|-------------------------------|-----|-----|---------|-----------|--------|
| 001 | | 266326-2 | TAPPING SCREW 4X18 | 1 | | | | |
| 002 | | 413C21-5 | FRONT GRIP | 1 | | | | |
| 003 | | 266326-2 | TAPPING SCREW 4X18 | 6 | | | | |
| 004 | | 8115P7-1 | HS011G NAME PLATE | 1 | | | | |
| 005 | | 140F99-0 | CAP COMPLETE | 1 | | | | |
| | C10 | 213A05-9 | O-RING16 | 1 | | | | |
| 006 | | 183U47-6 | HANDLE SET | 1 | | | | |
| | C10 | 263005-3 | RUBBER PIN 6 | 1 | | | | |
| | D10 | | INC. 13 | | | | | |
| 007 | | 419704-7 | LOCK OFF BUTTON | 1 | | | | |
| 008 | | 231433-0 | COMPRESSION SPRING 4 | 1 | | | | |
| 009 | | 650008-0 | SWITCH C3XB-1LPSPM | 1 | | | | |
| 010 | | 413C24-9 | SWITCH LEVER | 1 | | | | |
| 011 | | 632P65-6 | TERMINAL UNIT | 1 | | | | |
| 012 | | 8115R6-7 | HS011G SERIAL NO. LABEL | 1 | | | | |
| 013 | | 183U47-6 | HANDLE SET | 1 | | | | |
| | C10 | 263005-3 | RUBBER PIN 6 | 1 | | | | |
| | D10 | | INC. 6 | | | | | |
| 014 | | 911243-8 | PAN HEAD SCREW M5X25 | 3 | | | | |
| 015 | | 141G16-9 | TERMINAL HOUSING COMPLETE | 1 | | | | |
| | C10 | 263005-3 | RUBBER PIN 6 | 1 | | | | |
| 016 | | 266326-2 | TAPPING SCREW 4X18 | 2 | | | | |
| 017 | | 413C33-8 | MOTOR HOUSING | 1 | | | | |
| 018 | | 911258-5 | PAN HEAD SCREW M5X35 | 4 | | | | |
| 019 | | 413C34-6 | LIGHT COVER | 1 | | | | |
| 020 | | 620936-3 | LED CIRCUIT | 1 | | | | |
| 021 | | 266326-2 | TAPPING SCREW 4X18 | 1 | | | | |
| 022 | | 620J00-0 | CONTROLLER | 1 | | | | |
| 023 | | 652069-6 | FLAT HEAD SCREW M3X6 | 3 | | | | |
| 024 | | 632R96-7 | SENSOR UNIT | 1 | | | | |
| 025 | | 652093-9 | PAN HEAD SCREW M2X5 | 3 | | | | |
| 026 | | 629A40-1 | STATOR | 1 | | | | |
| 027 | | 413C22-3 | BAFFLE PLATE | 1 | | | | |
| 028 | | 266326-2 | TAPPING SCREW 4X18 | 2 | | | | |
| 029 | | 271453-2 | LEVER 132 | 1 | | | | |
| 030 | | 257953-6 | BOW STOP RING E-12 | 1 | | | | |
| 031 | | 252262-8 | COLLERED HEX. NUT M8 | 1 | | | | |
| 032 | | 210022-4 | BALL BEARING 626DDW | 1 | | | | |
| 033 | | 519730-7 | ROTOR ASS'Y | 1 | | | | |
| | D10 | | INC. 32,34 | | | | | |
| 034 | | 210059-1 | BALL BEARING 6000DDW | 1 | | | | |
| 035 | | 251529-1 | + PAN HEAD SCREW M4X14 | 1 | | | | |
| 036 | | 347676-5 | SHAFT LOCK | 1 | | | | |
| 037 | | 233084-5 | COMPRESSION SPRING 6 | 1 | | | | |
| 038 | | 286039-9 | CAP | 1 | | | | |
| 039 | | 141G23-2 | BLADE CASE COMPLETE | 1 | | | | |
| | C10 | 213434-0 | O RING 26 | 1 | | | | |
| | C20 | 263005-3 | RUBBER PIN 6 | 1 | | | | |
| | C30 | 8046A3-7 | SCALE LABEL | 1 | | | | |
| 040 | | 266396-1 | FLATHEAD SQUARENECKBOLT M8X24 | 1 | | | | |
| 041 | | 232563-0 | TENSION SPRING 4 | 1 | | | | |
| 042 | | 265A60-7 | + PAN HEAD SCREW M5X14 | 1 | | | | |
| 043 | | 162686-9 | OPEN LEVER | 1 | | | | |
| 044 | | 265135-6 | + COUNTERSUNK HEAD SCREW M4X1 | 1 | | | | |
| 045 | | 347577-7 | WASHER 6 | 1 | | | | |
| 046 | | 347576-9 | OPEN PLATE | 1 | | | | |
| 047 | | 265A82-7 | HEX. SOCKET HEAD SCREW M3X4 | 1 | | | | |
| 048 | | 262200-2 | RUBBER SLEEVE 10 | 1 | | | | |
| 049 | | 232674-1 | LEAF SPRING | 2 | | | | |
| 050 | | 265B77-6 | +COUNTERSUNK HEAD SCREW M8X3 | 1 | | | | |
| 051 | | 136173-4 | DUST NOZZLE ASS'Y | 1 | | | | |
| | D10 | | INC. 52 | | | | | |
| 052 | | 213444-7 | O RING 30 | 1 | | | | |
| 053 | | 312C21-1 | BLADE CASE COVER | 1 | | | | |
| 054 | | 8030S0-0 | XGT LOGO LABEL | 1 | | | | |

A:

Interchange

O : Yes

X : No

< : the new part can be substituted for the current.

> : the current part can be substituted for the new.

S : Interchangeable as a set.

MX**MEXICO****HS011G / 260_270MMCORDLESS CIRCULAR SAW**

| Item | Sub | Parts No. | Parts Description | Qty | I/C | E/C No. | Close No. | Remark |
|------|-----|-----------|--------------------------------|-----|-----|---------|-----------|--------|
| 055 | | 266034-5 | TAPPING SCREW CT 4X16 | 4 | | | | |
| 056 | | 210029-0 | BALL BEARING 608ZZ | 1 | | | | |
| 057 | | 961057-5 | RETAINING RING S-17 | 1 | | | | |
| 058 | | 227918-2 | HELICAL GEAR 49 | 1 | | | | |
| 059 | | 257451-0 | RING 17 | 1 | | | | |
| 060 | | 285809-3 | BEARING RETAINER 23-36 | 1 | | | | |
| 061 | | 210301-0 | BALL BEARING 6003DDW | 1 | | | | |
| 062 | | 213676-6 | O RING 53 | 1 | | | | |
| 063 | | 136649-1 | BEARING BOX ASS'Y | 1 | | | | |
| | D10 | | INC. 62 | | | | | |
| 064 | | 265034-2 | + COUNTERSUNK HEAD SCREW M5X1 | 2 | | | | |
| 065 | | 327923-0 | SPINDLE | 1 | | | | |
| 066 | | 232726-8 | TENSION SPRING 7 | 1 | | | | |
| 067 | | 312C22-9 | SAFETY COVER | 1 | | | | |
| 068 | | 413C35-4 | SPACER | 1 | | | | |
| 069 | | 413C35-4 | SPACER | 1 | | | | |
| 070 | | 257452-8 | RETAINING RING (EXT) WR-40 | 1 | | | | |
| 071 | | 224603-8 | INNER FLANGE 40 | 1 | | | | |
| 072 | | 224613-5 | OUTER FLANGE 40 | 1 | | | | |
| 073 | | 265A59-2 | HEX.SOCKET HEAD BOLT M8 | 1 | | | | |
| 074 | | 271451-6 | LEVER 55 | 1 | | | | |
| 075 | | 911113-1 | PAN HEAD SCREW M4X10 WITH WR | 1 | | | | |
| 076 | | 252275-9 | HEX. NUT M4-16 | 1 | | | | |
| 077 | | 312C17-2 | FRONT ANGULAR PLATE | 1 | | | | |
| 078 | | 347913-7 | DEPTH GUIDE | 1 | | | | |
| 079 | | 253111-2 | FLAT WASHER 6 | 1 | | | | |
| 080 | | 233314-4 | COMPRESSION SPRING 4 | 1 | | | | |
| 081 | | 265776-8 | THUMB SCREW M6X26 | 1 | | | | |
| 082 | | 216008-6 | STEEL BALL 4 | 1 | | | | |
| 083 | | 263041-9 | SHOULDER PIN 3-5 | 1 | | | | |
| 084 | | 231234-6 | COMPRESSION SPRING 3.5 | 1 | | | | |
| 085 | | 253811-4 | FLAT WASHER 5 | 1 | | | | |
| 086 | | 266559-9 | H.S.BUTTON HEAD BOLT M6X4 | 1 | | | | |
| 087 | | 450704-8 | DIAL 27 | 1 | | | | |
| 088 | | 251370-2 | + PAN HEAD SCREW M5 | 1 | | | | |
| 089 | | 251528-3 | + PAN HEAD SCREW M6 | 1 | | | | |
| 090 | | 266332-7 | R.H SQUARE NECK BOLT M6X35 | 1 | | | | |
| 091 | | 141G25-8 | FRAME COMPLETE | 1 | | | | |
| 092 | | 266229-0 | H.S.SET SCREW(CUP POINT)M5X8 | 1 | | | | |
| 093 | | 257580-9 | SLEEVE 8 | 1 | | | | |
| 094 | | 265A84-3 | PAN HEAD SCREW M4X12 WITH WR | 2 | | | | |
| 095 | | 911118-1 | PAN HEAD SCREW M4X12 | 1 | | | | |
| 096 | | 252270-9 | THUMB NUT M6 | 1 | | | | |
| 097 | | 253111-2 | FLAT WASHER 6 | 1 | | | | |
| 098 | | 266559-9 | H.S.BUTTON HEAD BOLT M6X4 | 1 | | | | |
| 099 | | 231234-6 | COMPRESSION SPRING 3.5 | 1 | | | | |
| 100 | | 263041-9 | SHOULDER PIN 3-5 | 1 | | | | |
| 101 | | 312C18-0 | REAR ANGULAR PLATE | 1 | | | | |
| 102 | | 419632-6 | POSITION PLATE | 1 | | | | |
| 103 | | 252014-7 | HEX. LOCK NUT M6-10 | 1 | | | | |
| 104 | | 265A83-5 | H.S.SET SCREW(FLAT POINT)M5X20 | 1 | | | | |
| 105 | | 412210-1 | SLIDER | 1 | | | | |
| 106 | | 233025-1 | COMPRESSION SPRING 2 | 1 | | | | |
| 108 | | 458092-7 | SLIDE LEVER | 2 | | | | |
| 109 | | 253932-2 | WAVE WASHER 10 | 2 | | | | |
| 110 | | 345977-5 | PLATE | 2 | | | | |
| 111 | | 265701-9 | THUMB SCREW M6X14 | 2 | | | | |
| 112 | | 265775-0 | THUMB SCREW M4X3 | 2 | | | | |
| 113 | | 233376-2 | COMPRESSION SPRING 8 | 2 | | | | |
| 114 | | 265181-9 | +TRUSS HEAD SCREW M5X20 | 4 | | | | |
| 115 | | 312C23-7 | BASE | 1 | | | | |
| 116 | | 419627-9 | HOLDER | 2 | | | | |
| 117 | | 266225-8 | H.S.SET SCREW(FLAT POINT)M6X8 | 2 | | | | |
| 118 | | 912112-6 | COUNTERSUNK HEAD SCREW M4X10 | 2 | | | | |
| 119 | | 345748-0 | LOCK WASHER | 2 | | | | |

A:

Interchange

O : Yes

X : No

< : the new part can be substituted for the current.

> : the current part can be substituted for the new.

S : Interchangeable as a set.

