



MX

MEXICO

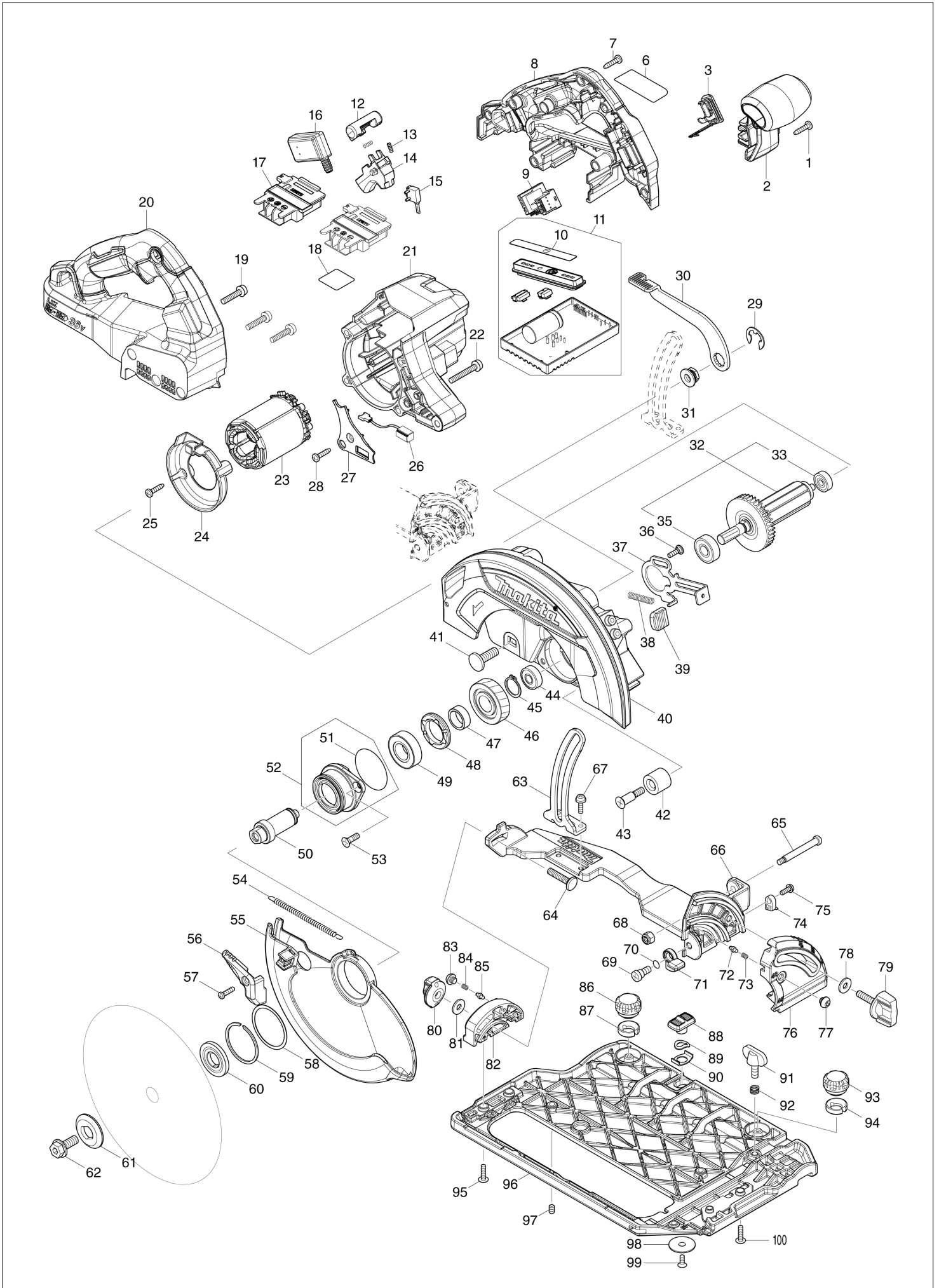
Diagram / Parts List

DHS783

185MM CORDLESS CIRCULAR SAW



(MX) DHS783 / 185MM CORDLESS CIRCULAR SAW



| | |
|-----------|---------------|
| MX | MEXICO |
|-----------|---------------|

DHS783 / 185MM CORDLESS CIRCULAR SAW

| Item | Sub | Parts No. | Parts Description | Qty | I/C | E/C No. | Close No. | Remark |
|------|-----|-----------|-------------------------------|-----|-----|---------|-----------|--------|
| 001 | | 266326-2 | TAPPING SCREW 4X18 | 1 | | | | |
| 002 | | 458750-5 | FRONT GRIP | 1 | | | | |
| 003 | | 140F99-0 | CAP COMPLETE | 1 | | | | |
| | C10 | 213218-6 | O RING 16 | 1 | | | DA223 | |
| | C11 | 213A05-9 | O-RING16 | 1 | O | DA223 | | |
| | C20 | 818H07-8 | CAP LABEL | 1 | | | | |
| 006 | | 855R05-1 | DHS783 NAME PLATE | 1 | | | | |
| 007 | | 266326-2 | TAPPING SCREW 4X18 | 8 | | | | |
| 008 | | 183K52-3 | HANDLE SET | 1 | | | | |
| | C10 | 263005-3 | RUBBER PIN 6 | 4 | | | | |
| | D10 | | INC. 20 | | | | | |
| 009 | | 620750-7 | SUB CONTROLLER | 1 | | | | |
| 010 | | 812G25-2 | INDICATION LABEL | 1 | | | | |
| 011 | | 620984-2 | CONTROLLER COMPLETE | 1 | | | | |
| | D10 | | INC. 10 | | | | | |
| 012 | | 419704-7 | LOCK OFF BUTTON | 1 | | | | |
| 013 | | 231433-0 | COMPRESSION SPRING 4 | 2 | | | | |
| 014 | | 458594-3 | SWITCH LEVER | 1 | | | | |
| 015 | | 632M92-5 | SWITCH UNIT | 1 | | | | |
| 016 | | 651083-9 | SWITCH C3XA-1PSPM | 1 | | | | |
| 017 | | 643874-2 | TERMINAL | 2 | | | | |
| 018 | | 855R09-3 | DHS783 SERIAL NO. LABEL | 1 | | | | |
| 019 | | 911243-8 | PAN HEAD SCREW M5X25 | 3 | | | | |
| 020 | | 183K52-3 | HANDLE SET | 1 | | | | |
| | C10 | 263005-3 | RUBBER PIN 6 | 4 | | | | |
| | D10 | | INC. 8 | | | | | |
| 021 | | 458746-6 | MOTOR HOUSING | 1 | | | | |
| 022 | | 911258-5 | PAN HEAD SCREW M5X35 | 4 | | | | |
| 023 | | 629375-4 | STATOR | 1 | | | | |
| 024 | | 458749-0 | BAFFLE PLATE | 1 | | | | |
| 025 | | 266326-2 | TAPPING SCREW 4X18 | 2 | | | | |
| 026 | | 620936-3 | LED CIRCUIT | 1 | | | | |
| 027 | | 458751-3 | LIGHT COVER | 1 | | | | |
| 028 | | 266326-2 | TAPPING SCREW 4X18 | 1 | | | | |
| 029 | | 257953-6 | BOW STOP RING E-12 | 1 | | | | |
| 030 | | 271447-7 | LEVER 110 | 1 | | | | |
| 031 | | 252262-8 | COLLERED HEX. NUT M8 | 1 | | | | |
| 032 | | 519534-7 | ROTOR ASSY | 1 | | | | |
| | D10 | | INC. 33,35 | | | | | |
| 033 | | 210022-4 | BALL BEARING 626DDW | 1 | | | | |
| 035 | | 210059-1 | BALL BEARING 6000DDW | 1 | | | | |
| 036 | | 251529-1 | + PAN HEAD SCREW M4X14 | 1 | | | | |
| 037 | | 347441-2 | SHAFT LOCK | 1 | | | | |
| 038 | | 232381-6 | COMPRESSION SPRING 6 | 1 | | | | |
| 039 | | 286039-9 | CAP | 1 | | | | |
| 040 | | 140D80-9 | BLADE CASE COMPLETE | 1 | | | | |
| | C10 | 213434-0 | O RING 26 | 1 | | | | |
| | C20 | 818C47-6 | SCALE LABEL | 1 | | | | |
| 041 | | 266396-1 | FLATHEAD SQUARENECKBOLT M8X24 | 1 | | | | |
| 042 | | 262185-2 | RUBBER SLEEVE8 | 1 | | | | |
| 043 | | 251572-0 | + COUNTERSUNK HEAD SCREW M6X3 | 1 | | | | |
| 044 | | 210029-0 | BALL BEARING 608ZZ | 1 | | | | |
| 045 | | 961057-5 | RETAINING RING S-17 | 1 | | | | |
| 046 | | 226838-7 | HELICAL GEAR 37 | 1 | | | | |
| 047 | | 257451-0 | RING 17 | 1 | | | | |
| 048 | | 285809-3 | BEARING RETAINER 23-36 | 1 | | | | |
| 049 | | 210301-0 | BALL BEARING 6003DDW | 1 | | | | |
| 050 | | 327192-3 | SPINDLE | 1 | | | | |
| 051 | | 213565-5 | O RING 42 | 1 | | | | |
| 052 | | 136021-7 | BEARING BOX ASSY | 1 | | | | |
| | D10 | | INC. 51 | | | | | |
| 053 | | 265034-2 | + COUNTERSUNK HEAD SCREW M5X1 | 2 | | | | |
| 054 | | 232467-6 | TENSION SPRING 4 | 1 | | | | |
| 055 | | 319740-2 | SAFETY COVER | 1 | | | | |
| 056 | | 271450-8 | LEVER 37 | 1 | | | | |

A:DHS783ZU(N)
 B:DHS783PT2J(L)
 C:DHS783T2JU(L)

Interchange
 O : Yes
 X : No
 < : the new part can be substituted for the current.
 > : the current part can be substituted for the new.
 S : Interchangeable as a set.

MX

MEXICO

DHS783 / 185MM CORDLESS CIRCULAR SAW

| Item | Sub | Parts No. | Parts Description | Qty | I/C | E/C No. | Close No. | Remark |
|--------|-----|-----------|--------------------------------|-----|-----|---------|-----------|--------|
| 057 | | 265178-8 | PAN HEAD SCREW M4X16 | 1 | | | | |
| 058 | | 267337-0 | FLAT WASHER 40 | 1 | | | | |
| 059 | | 257452-8 | RETAINING RING (EXT) WR-40 | 1 | | | | |
| 060 | | 224594-3 | INNER FLANGE 35 | 1 | | | | |
| 061 | | 224409-4 | OUTER FLANGE 35 | 1 | | | | |
| 062 | | 266283-4 | HEX. SOCKET HEX. BOLT M8X20 | 1 | | | | |
| 063 | | 347532-9 | DEPTH GUIDE | 1 | | | | |
| 064 | | 251920-3 | CAP SQUARE NECK BOLT M6X30 | 1 | | | | |
| 065 | | 265118-6 | + PAN HEAD SCREW M5 | 1 | | | | |
| 066 | | 319829-6 | FRAME | 1 | | | | |
| 067 | | 911516-9 | PAN HEAD SCREW M4X12 | 2 | | | | |
| 068 | | 252103-8 | HEX. LOCK NUT M5-8 | 1 | | | | |
| 069 | | 251267-5 | + PAN HEAD SCREW M6 | 1 | | | | |
| 070 | | 213026-5 | O RING 7 | 1 | | | | |
| 071 | | 319827-0 | STOPPER | 1 | | | | |
| 072 | | 263041-9 | SHOULDER PIN 3-5 | 1 | | | | |
| 073 | | 231234-6 | COMPRESSION SPRING 3.5 | 1 | | | | |
| 074 | | 419632-6 | POSITION PLATE | 1 | | | | |
| 075 | | 911118-1 | PAN HEAD SCREW M4X12 | 1 | | | | |
| 076 | | 319830-1 | FRONT ANGULAR PLATE | 1 | | | | |
| 077 | | 266559-9 | H.S.BUTTON HEAD BOLT M6X4 | 1 | | | | |
| 078 | | 253111-2 | FLAT WASHER 6 | 1 | | | | |
| 079 | | 265776-8 | THUMB SCREW M6X26 | 1 | | | | |
| 080 | | 252270-9 | THUMB NUT M6 | 1 | | | | |
| 081 | | 253111-2 | FLAT WASHER 6 | 1 | | | | |
| 082 | | 319831-9 | REAR ANGULAR PLATE | 1 | | | | |
| 083 | | 266559-9 | H.S.BUTTON HEAD BOLT M6X4 | 1 | | | | |
| 084 | | 231234-6 | COMPRESSION SPRING 3.5 | 1 | | | | |
| 085 | | 263041-9 | SHOULDER PIN 3-5 | 1 | | | | |
| 086 | | 265775-0 | THUMB SCREW M4X3 | 1 | | | | |
| 087 | | 419627-9 | HOLDER | 1 | | | | |
| 088 | | 458092-7 | SLIDE LEVER | 1 | | | | |
| 089 | | 253932-2 | WAVE WASHER 10 | 1 | | | | |
| 090 | | 345977-5 | PLATE | 1 | | | | |
| 091 | | 265701-9 | THUMB SCREW M6X14 | 1 | | | | |
| 092 | | 233376-2 | COMPRESSION SPRING 8 | 1 | | | | |
| 093 | | 265775-0 | THUMB SCREW M4X3 | 1 | | | | |
| 094 | | 419627-9 | HOLDER | 1 | | | | |
| 095 | | 265174-6 | + TRUSS HEAD SCREW M4X16 | 2 | | | | |
| 096 | | 319828-8 | BASE | 1 | | | | |
| 097 | | 266225-8 | H.S.SET SCREW(FLAT POINT)M6X8 | 3 | | | | |
| 098 | | 345748-0 | LOCK WASHER | 1 | | | | |
| 099 | | 912112-6 | COUNTERSUNK HEAD SCREW M4X10 | 1 | | | | |
| 100 | | 265174-6 | + TRUSS HEAD SCREW M4X16 | 2 | | | | |
| A01 | | 164095-8 | GUIDE RULE | 1 | | | | |
| A02 | | 196520-1 | DUST NOZZLE SET | 1 | | | | |
| | C10 | 911128-8 | P.H.SCREW M4X16 WITH WR | 1 | | | | |
| A03 | | 783204-6 | HEX. WRENCH 6 | 1 | | | | |
| A04 | | B-62038 | TCT BLADE185X24T WOOD EFFICUT | 1 | | | | |
| A05 | | 257370-0 | RING 16 | 1 | | | | |
| A06B | | ***DC18RD | DC18RD TWO PORT FAST CHARGER | 1 | | | | |
| | D10 | | COMPO-PARTS | | | | | |
| A06C | | ***DC18RD | DC18RD TWO PORT FAST CHARGER | 1 | | | | |
| | D10 | | COMPO-PARTS | | | | | |
| A07B | | 197283-2 | BATTERY BL1850B SET | 2 | | | | |
| A07C | | 197280-8 | BATTERY BL1850B SET | 2 | | | C5219 | |
| A07-1C | | 197280-8 | BATTERY BL1850B SET | 2 | O | C5219 | | |
| A08B | | 819H68-1 | DHS783PT2J INDICATION LABEL | 1 | | | | |
| A08C | | 819H70-4 | DHS783T2JU INDICATION LABEL | 1 | | | | |
| A09B | | 819H69-9 | DHS783PT2J PLASTIC CASE LABEL | 2 | | | | |
| A09C | | 819H71-2 | DHS783T2JU PLASTIC CASE LABEL | 2 | | | | |
| A10B | | 821552-6 | CONNECTOR PLASTIC CASE (TYPE4) | 1 | | | | |
| | C10 | 453974-8 | LATCH | 4 | | | | |
| A10C | | 821552-6 | CONNECTOR PLASTIC CASE (TYPE4) | 1 | | | | |
| | C10 | 453974-8 | LATCH | 4 | | | | |

A:DHS783ZU(N)
B:DHS783PT2J(L)
C:DHS783T2JU(L)

Interchange
O : Yes
X : No
< : the new part can be substituted for the current.
> : the current part can be substituted for the new.
S : Interchangeable as a set.

