

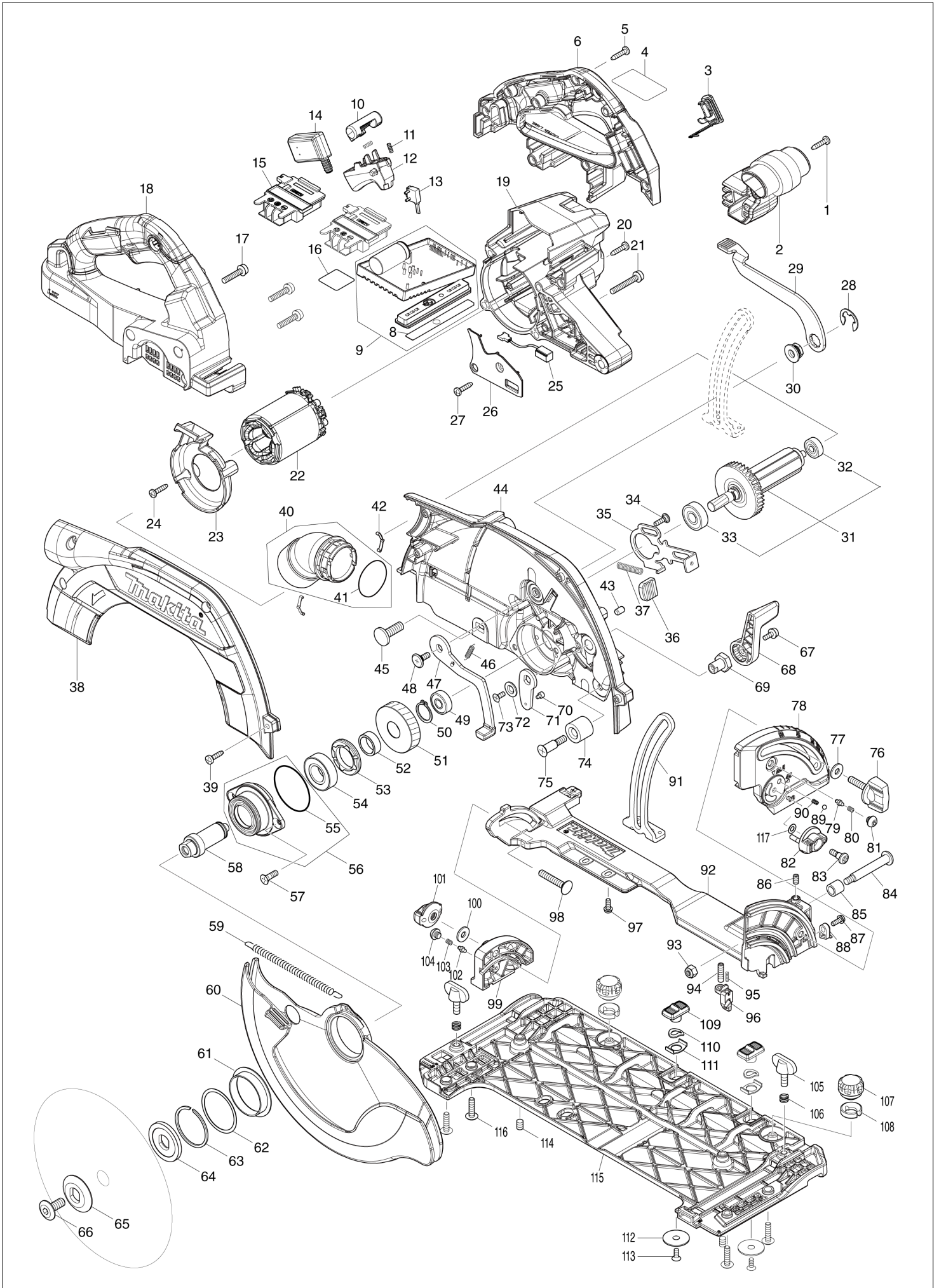


# Diagram / Parts List

**DHS900**

**235MM CORDLESS CIRCULAR SAW**

# (MX) DHS900 / 235MM CORDLESS CIRCULAR SAW



MX

MEXICO

## DHS900 / 235MM CORDLESS CIRCULAR SAW

MX

Item	Sub	Parts No.	Parts Description	Qty	I/C	E/C No.	Close No.	Remark
001		266326-2	TAPPING SCREW 4X18	1				
002		459828-7	FRONT GRIP	1				
003		140F99-0	CAP COMPLETE	1				
	C10	213218-6	O RING 16	1				
	C20	818H07-8	CAP LABEL	1				
004		856L73-1	DHS900 NAME PLATE	1				
005		266326-2	TAPPING SCREW 4X18	8				
006		183N39-3	HANDLE SET	1				
	C10	263005-3	RUBBER PIN 6	4				
	D10		INC. 18					
008		813T74-0	INDICATION LABEL	1				
009		620C59-5	CONTROLLER COMPLETE	1				
	D10		INC. 8					
010		419704-7	LOCK OFF BUTTON	1				
011		231433-0	COMPRESSION SPRING 4	2				
012		459829-5	SWITCH LEVER	1				
013		632M92-5	SWITCH UNIT	1				
014		651083-9	SWITCH C3XA-1PSPM	1				
015		643874-2	TERMINAL	2				
016		856L79-9	DHS900 SERIAL NO. LABEL	1				
017		911243-8	PAN HEAD SCREW M5X25	3				
018		183N39-3	HANDLE SET	1				
	C10	263005-3	RUBBER PIN 6	4				
	D10		INC. 6					
019		459823-7	MOTOR HOUSING	1				
020		266326-2	TAPPING SCREW 4X18	1				
021		911258-5	PAN HEAD SCREW M5X35	4				
022		629462-9	STATOR	1				
023		459826-1	BAFFLE PLATE	1				
024		266326-2	TAPPING SCREW 4X18	2				
025		620936-3	LED CIRCUIT	1				
026		459827-9	LIGHT COVER	1				
027		266326-2	TAPPING SCREW 4X18	1				
028		257953-6	BOW STOP RING E-12	1				
029		271453-2	LEVER 132	1				
030		252262-8	COLLERED HEX. NUT M8	1				
031		519602-6	ROTOR ASS'Y	1				
	D10		INC. 32,33					
032		210022-4	BALL BEARING 626DDW	1				
033		210059-1	BALL BEARING 6000DDW	1				
034		251529-1	+ PAN HEAD SCREW M4X14	1				
035		347575-1	SHAFT LOCK	1				
036		286039-9	CAP	1				
037		233084-5	COMPRESSION SPRING 6	1				
038		319860-2	BLADE CASE COVER	1				
039		266034-5	TAPPING SCREW CT 4X16	4				
040		136173-4	DUST NOZZLE ASS'Y	1				
	D10		INC. 41					
041		213444-7	O RING 30	1				
042		232227-6	LEAF SPRING	2				
043		263005-3	RUBBER PIN 6	1			D1803	
043-1		263005-3	RUBBER PIN 6	1	S	D1803		
044		140P84-3	BLADE CASE COMPLETE	1			D1803	
	C10	213434-0	O RING 26	1			D1803	
	C20	8004T2-8	SCALE LABEL	1			D1803	
044-1		140P84-3	BLADE CASE COMPLETE	1	S	D1803		
	C10	213434-0	O RING 26	1			D1803	
	C20	8004T2-8	SCALE LABEL	1			D1803	
	D10		INC. 43				D1803	
045		266396-1	FLATHEAD SQUARENECKBOLT M8X24	1				
046		232563-0	TENSION SPRING 4	1				
047		162686-9	OPEN LEVER	1				
048		265A60-7	+ PAN HEAD SCREW M5X14	1				
049		210029-0	BALL BEARING 608ZZ	1				
050		961057-5	RETAINING RING S-17	1				

B:DHS900PT2(L)

Interchange

O : Yes

X : No

&lt; : the new part can be substituted for the current.

&gt; : the current part can be substituted for the new.

S : Interchangeable as a set.

## DHS900 / 235MM CORDLESS CIRCULAR SAW

Item	Sub	Parts No.	Parts Description	Qty	I/C	E/C No.	Close No.	Remark
051		226934-1	HELICAL GEAR 46	1				
052		257451-0	RING 17	1				
053		285809-3	BEARING RETAINER 23-36	1				
054		210301-0	BALL BEARING 6003DDW	1				
055		213623-7	O RING 46	1				
056		136192-0	BEARING BOX ASS'Y	1				
	D10		INC. 55					
057		265034-2	+ COUNTERSUNK HEAD SCREW M5X1	2				
058		327192-3	SPINDLE	1				
059		232562-2	TENSION SPRING 6	1				
060		319861-0	SAFETY COVER	1				
061		459830-0	SPACER	1				
062		267337-0	FLAT WASHER 40	1				
063		257452-8	RETAINING RING (EXT) WR-40	1				
064		224603-8	INNER FLANGE 40	1				
065		224600-4	OUTER FLANGE 38	1				
066		265A59-2	HEX.SOCKET HEAD BOLT M8	1				
067		911113-1	PAN HEAD SCREW M4X10 WITH WR	1				
068		271451-6	LEVER 55	1				
069		252275-9	HEX. NUT M4-16	1				
070		265A82-7	HEX. SOCKET HEAD SCREW M3X4	1				
071		347576-9	OPEN PLATE	1				
072		347577-7	WASHER 6	1				
073		265135-6	+ COUNTERSUNK HEAD SCREW M4X1	1				
074		262185-2	RUBBER SLEEVE8	1				
075		251572-0	+ COUNTERSUNK HEAD SCREW M6X3	1				
076		265776-8	THUMB SCREW M6X26	1				
077		253111-2	FLAT WASHER 6	2				
078		319865-2	FRONT ANGULAR PLATE	1				
079		263041-9	SHOULDER PIN 3-5	1				
080		231234-6	COMPRESSION SPRING 3.5	1				
081		266559-9	H.S.BUTTON HEAD BOLT M6X4	1				
082		450704-8	DIAL 27	1				
083		251370-2	+ PAN HEAD SCREW M5	1				
084		251528-3	+ PAN HEAD SCREW M6	1				
085		257580-9	SLEEVE 8	1				
086		266229-0	H.S.SET SCREW(CUP POINT)M5X8	1				
087		911118-1	PAN HEAD SCREW M4X12	1				
088		419632-6	POSITION PLATE	1				
089		216008-6	STEEL BALL 4	1				
090		233314-4	COMPRESSION SPRING 4	1				
091		347574-3	DEPTH GUIDE	1				
092		140P89-3	FRAME COMPLETE	1				
	C10	233025-1	COMPRESSION SPRING 2	2				
	C20	259008-3	PUSH NUT 4	2				
	C30	286041-2	CAP 14	2				
	C40	345747-2	SPACER PLATE	2				
	C50	347392-9	PLATE	2				
093		252014-7	HEX. LOCK NUT M6-10	1				
094		265A83-5	H.S.SET SCREW(FLAT POINT)M5X20	1				
095		233025-1	COMPRESSION SPRING 2	1				
096		412210-1	SLIDER	1				
097		265A84-3	PAN HEAD SCREW M4X12 WITH WR	2				
098		266332-7	R.H SQUARE NECK BOLT M6X35	1				
099		319866-0	REAR ANGULAR PLATE	1				
100		253111-2	FLAT WASHER 6	1				
101		252270-9	THUMB NUT M6	1				
102		263041-9	SHOULDER PIN 3-5	1				
103		231234-6	COMPRESSION SPRING 3.5	1				
104		266559-9	H.S.BUTTON HEAD BOLT M6X4	1				
105		265701-9	THUMB SCREW M6X14	2				
106		233376-2	COMPRESSION SPRING 8	2				
107		265775-0	THUMB SCREW M4X3	2				
108		419627-9	HOLDER	2				
109		458092-7	SLIDE LEVER	2				

B:DHS900PT2(L)

Interchange

O : Yes

X : No

< : the new part can be substituted for the current.

> : the current part can be substituted for the new.

S : Interchangeable as a set.

