

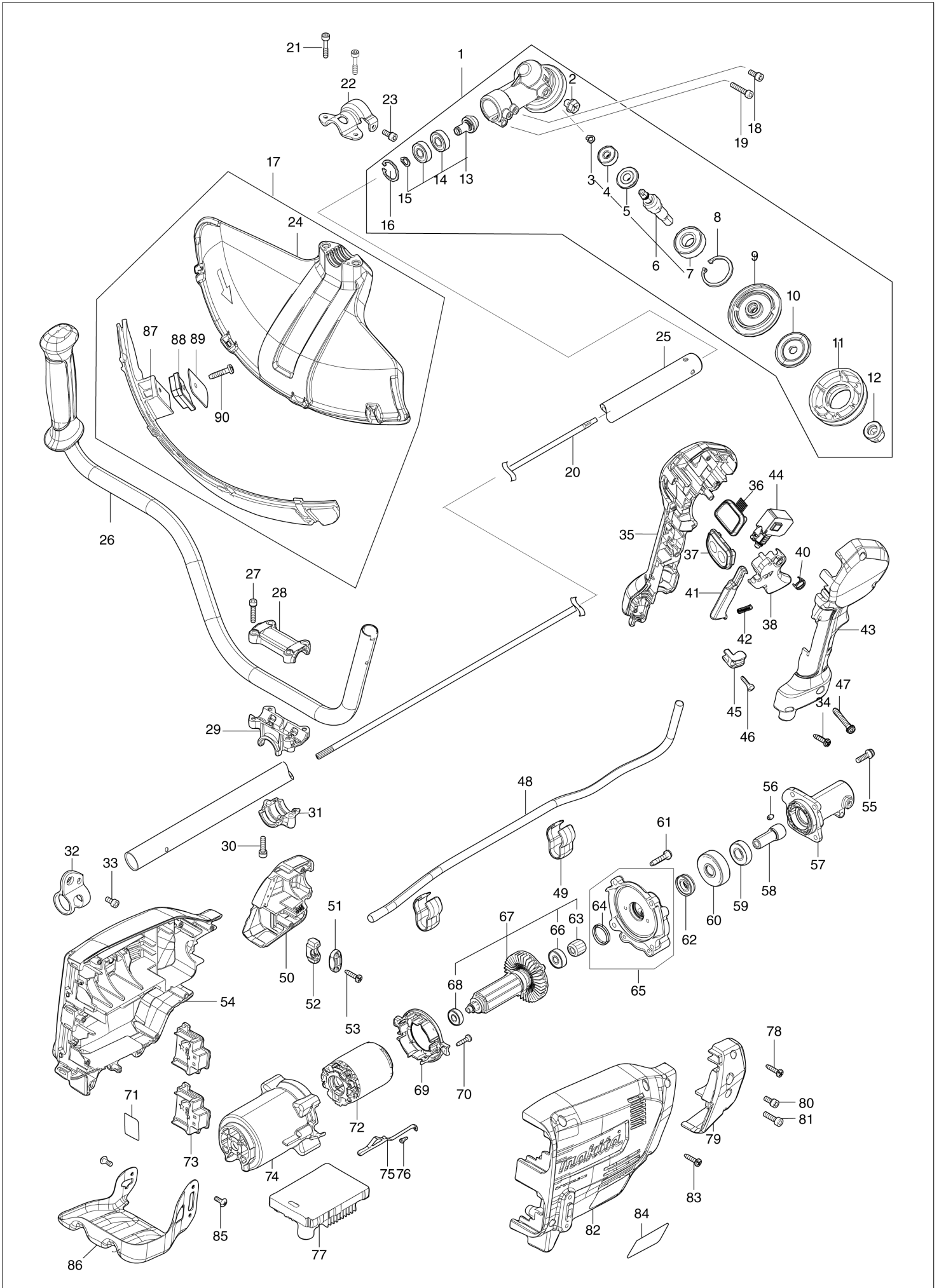


# Diagram / Parts List

**DUR369A**

**CORDLESS GRASS TRIMMER**

# (MX) DUR369A / CORDLESS GRASS TRIMMER



MX

MEXICO

## DUR369A / CORDLESS GRASS TRIMMER

MX

| Item | Sub | Parts No. | Parts Description             | Qty | I/C | E/C No. | Close No. | Remark |
|------|-----|-----------|-------------------------------|-----|-----|---------|-----------|--------|
| 001  |     | 123853-1  | GEAR CASE ASSEMBLY            | 1   |     |         |           |        |
|      | D10 |           | INC. 2-16                     |     |     |         |           |        |
| 002  |     | 265590-2  | +HEX.BOLT M8X10 WITH R        | 1   |     |         |           |        |
| 003  |     | 232350-7  | RING SPRING 6                 | 1   |     |         |           |        |
| 004  |     | 210030-5  | BALL BEARING 627ZZ            | 1   |     |         |           |        |
| 005  |     | 221484-1  | SPIRAL BEVEL GEAR 19          | 1   |     |         |           |        |
| 006  |     | 136233-2  | CUTTER SHAFT ASS'Y            | 1   |     |         |           |        |
|      | D10 |           | INC. 3-5,7                    |     |     |         |           |        |
| 007  |     | 211228-7  | BALL BEARING 6202DDW          | 1   |     |         |           |        |
| 008  |     | 257432-4  | RETAINING RING R-35           | 1   |     |         |           |        |
| 009  |     | 144312-2  | RECEIVE WASHER COMPLETE       | 1   |     |         |           |        |
| 010  |     | 347104-0  | CLAMP WASHER                  | 1   |     |         |           |        |
| 011  |     | 457274-8  | CUP US                        | 1   |     |         |           |        |
| 012  |     | 252236-9  | HEX. LOCK NUT M10-17          | 1   |     |         |           |        |
| 013  |     | 136235-8  | SPIRAL BEVEL GEAR ASS'Y       | 1   |     |         |           |        |
|      | D10 |           | INC. 14,15                    |     |     |         |           |        |
| 014  |     | 210049-4  | BALL BEARING 609ZZ            | 2   |     |         |           |        |
| 015  |     | 257986-1  | RETAINING RING (EXT) S-9      | 1   |     |         |           |        |
| 016  |     | 257987-9  | RETAINING RING (INT)R-24      | 1   |     |         |           |        |
| 017  |     | 191B54-1  | PROTECTOR U 430 SET MG        | 1   |     |         |           |        |
|      | D10 |           | INC. 24,87-90                 |     |     |         |           |        |
| 018  |     | 922216-6  | HEX. SOCKET HEAD BOLT M5X14   | 1   |     |         |           |        |
| 019  |     | 922242-5  | HEX. SOCKET HEAD BOLT M5X25   | 1   |     |         |           |        |
| 020  |     | 327056-1  | SHAFT                         | 1   |     |         |           |        |
| 021  |     | 251513-6  | H.S.H.BOLT M5X25              | 2   |     |         |           |        |
| 022  |     | 347107-4  | PROTECTOR CLAMP 24            | 1   |     |         |           |        |
| 023  |     | 922216-6  | HEX. SOCKET HEAD BOLT M5X14   | 1   |     |         |           |        |
| 024  |     | 457271-4  | PROTECTOR U 450               | 1   |     |         |           |        |
| 025  |     | 140P09-7  | SHAFT PIPE COMPLETE G         | 1   |     |         |           |        |
|      | C10 | 819312-8  | MAKITA LOGO LABEL             | 1   |     |         |           |        |
| 026  |     | 140L83-1  | HANDLE 19 COMPLETE            | 1   |     |         |           |        |
| 027  |     | 922241-7  | HEX. SOCKET HEAD BOLT M5X25   | 4   |     |         |           |        |
| 028  |     | 318272-6  | HANDLE HOLDER 1               | 1   |     |         |           |        |
| 029  |     | 319705-4  | HANDLE HOLDER                 | 1   |     |         |           |        |
| 030  |     | 922241-7  | HEX. SOCKET HEAD BOLT M5X25   | 2   |     |         |           |        |
| 031  |     | 319703-8  | PIPE CLAMP                    | 1   |     |         |           |        |
| 032  |     | 347116-3  | HANGER                        | 1   |     |         |           |        |
| 033  |     | 922212-4  | HEX. SOCKET HEAD BOLT M5X12   | 1   |     |         |           |        |
| 034  |     | 266326-2  | TAPPING SCREW 4X18            | 5   |     |         |           |        |
| 035  |     | 183L61-8  | GRIP SET                      | 1   |     |         |           |        |
|      | C10 | 252180-0  | HEX. LOCK NUT M5-8            | 1   |     |         |           |        |
|      | D10 |           | INC. 43                       |     |     |         |           |        |
| 036  |     | 140K36-4  | INDICATION CIRCUIT COMPLETE G | 1   |     |         |           |        |
| 037  |     | 140K35-6  | SWITCH CIRCUIT COMPLETE G     | 1   |     |         |           |        |
|      | C10 | 819J26-9  | SWITCH LABEL                  | 1   |     |         |           |        |
| 038  |     | 459145-5  | SWITCH LEVER                  | 1   |     |         |           |        |
| 040  |     | 233540-5  | TORSION SPRING 11             | 1   |     |         |           |        |
| 041  |     | 459146-3  | LOCK OFF LEVER                | 1   |     |         |           |        |
| 042  |     | 233101-1  | COMPRESSION SPRING 4          | 1   |     |         |           |        |
| 043  |     | 183L61-8  | GRIP SET                      | 1   |     |         |           |        |
|      | C10 | 252180-0  | HEX. LOCK NUT M5-8            | 1   |     |         |           |        |
|      | D10 |           | INC. 35                       |     |     |         |           |        |
| 044  |     | 651436-2  | SWITCH C3JW-1A-P-2            | 1   |     |         |           |        |
| 045  |     | 687260-7  | STRAIN RELIEF                 | 1   |     |         |           |        |
| 046  |     | 266326-2  | TAPPING SCREW 4X18            | 1   |     |         |           |        |
| 047  |     | 911258-5  | PAN HEAD SCREW M5X35          | 1   |     |         |           |        |
| 048  |     | 699132-4  | POWER SUPPLY CORD UNIT        | 1   |     |         |           |        |
| 049  |     | 457458-8  | CLAMP                         | 2   |     |         |           |        |
| 050  |     | 183N25-4  | HOUSING COVER SET             | 1   |     |         |           |        |
|      | D10 |           | INC. 79                       |     |     |         |           |        |
| 051  |     | 687124-5  | STRAIN RELIEF                 | 1   |     |         |           |        |
| 052  |     | 687051-6  | STRAIN RELIEF                 | 1   |     |         |           |        |
| 053  |     | 266326-2  | TAPPING SCREW 4X18            | 2   |     |         |           |        |
| 054  |     | 183N23-8  | HOUSING SET                   | 1   |     |         |           |        |
|      | C10 | 263005-3  | RUBBER PIN 6                  | 4   |     |         |           |        |

B:DUR369APT2(L)

Interchange

O : Yes

X : No

&lt; : the new part can be substituted for the current.

&gt; : the current part can be substituted for the new.

S : Interchangeable as a set.

