



MX

MEXICO

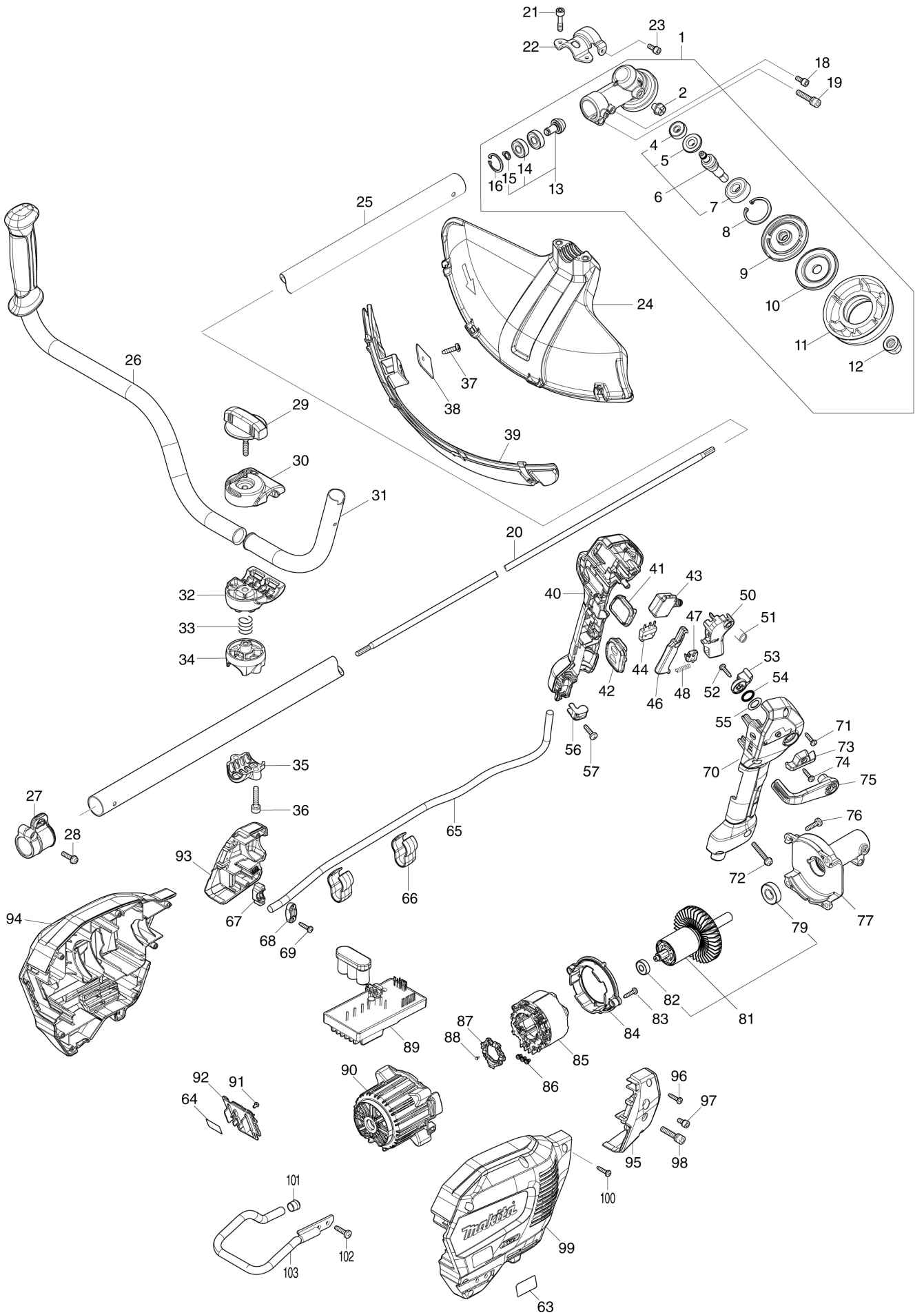
Diagram / Parts List

UR013G

CORDLESS GRASS TRIMMER



(MX) UR013G / CORDLESS GRASS TRIMMER



MX	MEXICO
-----------	---------------

UR013G / CORDLESS GRASS TRIMMER

Item	Sub	Parts No.	Parts Description	Qty	I/C	E/C No.	Close No.	Remark
001		122D71-2	GEAR CASE ASSEMBLY G	1				
	D10		INC. 2,6,8-13,16					
002		265590-2	+HEX.BOLT M8X10 WITH R	1				
004		210030-5	BALL BEARING 627ZZ	1				
005		226988-8	SPIRAL BEVEL GEAR 19	1				
006		136923-7	CUTTER SHAFT US ASSEMBLY	1				
	D10		INC. 4,5,7					
007		211228-7	BALL BEARING 6202DDW	1				
008		259069-3	RETAINING RING (INT) R-35	1				
009		140N88-3	RECEIVE WASHER COMPLETE	1				
010		347766-4	CLAMP WASHER US	1				
011		413201-5	CUP US	1				
012		252236-9	HEX. LOCK NUT M10-17	1				
013		136922-9	SPIRAL BEVEL GEAR ASSEMBLY	1				
	D10		INC. 14,15					
014		210157-1	BALL BEARING 609ZZ	2				
015		259071-6	RETAINING RING (EXT) S-9	1				
016		259072-4	RETAINING RING (INT)R-24	1				
018		922216-6	H.S.H.BOLT M5X14 WITH W	1				
019		922353-6	HEX.SOCKET HEAD BOLT M6X30	1				
020		326205-7	SHAFT	1				
021		266280-0	HEX. SOCKET HEAD BOLT M6X25	2				
022		347B13-5	PROTECTOR CLAMP 25G	1				
023		922216-6	H.S.H.BOLT M5X14 WITH W	1				
024		413P07-7	PROTECTOR U 450	1				
025		141N28-4	SHAFT PIPE COMPLETE A	1				
	C10	819312-8	MAKITA LOGO LABEL	1				
	C20	8040V7-0	CAUTION LABEL	1				
026		141D27-6	HANDLE 22L COMPLETE	1				
	C10	273014-4	GRIP 36	1				
027		141N34-9	HANGER	1				
	C10	931202-6	HEX. NUT M5	1				
028		911233-1	PAN HEAD SCREW M5X20	1				
029		162965-5	KNOB 57	1				
030		144313-0	UPPER HANDLE HOLDER COMPLETE	1				
	C10	263005-3	RUBBER PIN 6	1				
031		327837-3	HANDLE 22 R	1				
032		319517-5	LOWER HANDLE HOLDER	1				
033		233309-7	COMPRESSION SPRING 17	1				
034		312D92-4	UPPER PIPE HOLDER 25	1				
035		312D93-2	LOWER PIPE HOLDER 25	1				
036		922351-0	HEX. SOCKET HEAD BOLT M6X30	2				
037		266388-0	TAPPING SCREW 5X16	1				
038		347115-5	CUTTER	1				
039		144316-4	PROTECTOR U EXT. 420-450 COMP	1				
	C10	346696-6	HOOK	2				
	C20	232284-4	LEAF SPRING	2				
040		183X45-8	GRIP SET	1				
	C10	252180-0	HEX. LOCK NUT M5-8	1				
	D10		INC. 70					
041		141N49-6	INDICATION CIRCUIT COMPLETE E	1				
042		141N45-4	SWITCH CIRCUIT COMPLETE G	1				
	C10	8064D7-4	SWITCH LABEL	1				
043		651492-2	SWITCH C3JR-1A-PAXD3	1				
044		632U35-5	SWITCH UNIT	1				
046		459146-3	LOCK OFF LEVER	1				
047		632U36-3	SWITCH UNIT	1				
048		233101-1	COMPRESSION SPRING 4	1				
050		413N90-2	SWITCH LEVER	1				
051		233622-3	TORSION SPRING 12	1				
052		266326-2	TAPPING SCREW 4X18	1				
053		413N92-8	LINK	1				
054		213154-6	O RING 14	1				
055		253798-0	FLAT WASHER 13	1				
056		687260-7	STRAIN RELIEF	1				

A:UR013GZ02(N)
B:UR013GT203(L)

Interchange
O : Yes
X : No
< : the new part can be substituted for the current.
> : the current part can be substituted for the new.
S : Interchangeable as a set.

MX	MEXICO
-----------	---------------

UR013G / CORDLESS GRASS TRIMMER

Item	Sub	Parts No.	Parts Description	Qty	I/C	E/C No.	Close No.	Remark
057		266326-2	TAPPING SCREW 4X18	1				
063		8585U1-7	UR013G NAME PLATE	1				
064		8585V0-6	UR013G SERIAL NO. LABEL	1				
065		699218-4	POWER SUPPLY CORD UNIT	1				
066		457458-8	CLAMP	2				
067		687051-6	STRAIN RELIEF	1				
068		687124-5	STRAIN RELIEF	1				
069		266326-2	TAPPING SCREW 4X18	2				
070		183X45-8	GRIP SET	1				
	C10	252180-0	HEX. LOCK NUT M5-8	1				
	D10		INC. 40					
071		266326-2	TAPPING SCREW 4X18	5				
072		911258-5	PAN HEAD SCREW M5X35	1				
073		413P02-7	GUARD	1				
074		266326-2	TAPPING SCREW 4X18	1				
075		413N91-0	CONTROL LEVER	1				
076		266420-0	TAPPING SCREW 5X20	4				
077		136862-1	PIPE BRACKET ASS'Y	1				
	C10	263002-9	RUBBER PIN 4	1				
079		210244-6	BALL BEARING 6001ZZ	1				
081		519794-1	ROTOR ASS'Y	1				
	D10		INC. 79,82					
082		210062-2	BALL BEARING 607ZZ	1				
083		266326-2	TAPPING SCREW 4X18	2				
084		413N96-0	BAFFLE PLATE	1				
085		629B96-0	STATOR	1				
086		652069-6	FLAT HEAD SCREW M3X6	3				
087		632R96-7	SENSOR UNIT	1				
088		652093-9	PAN HEAD SCREW M2X5	3			DN309	
088-1		652119-7	PAN HEAD SCREW M2X6	3	O	DN309		
089		620K88-6	CONTROLLER	1				
090		413N73-2	MOTOR HOUSING	1				
091		652031-1	PAN HEAD SCREW M3X6	2				
092		632T07-4	TERMINAL UNIT	1				
093		183X42-4	HOUSING COVER SET	1				
	D10		INC. 95					
094		183X39-3	HOUSING SET	1				
	C10	263005-3	RUBBER PIN 6	2				
	C20	8025F3-0	XGT LOGO LABEL	1				
	D10		INC. 99					
095		183X42-4	HOUSING COVER SET	1				
	D10		INC. 93					
096		266326-2	TAPPING SCREW 4X18	2				
097		922211-6	H.S.H.BOLT M5X12 WITH W	1				
098		922353-6	HEX.SOCKET HEAD BOLT M6X30	1				
099		183X39-3	HOUSING SET	1				
	C10	263005-3	RUBBER PIN 6	2				
	C20	8025F3-0	XGT LOGO LABEL	1				
	D10		INC. 94					
100		266326-2	TAPPING SCREW 4X18	7				
101		422230-7	CAP	1				
102		266420-0	TAPPING SCREW 5X20	2				
103		327B36-9	BATTERY GUARD	1				
A01		122A37-4	BAND ASSEMBLY	1				
A04		144392-8	TOOL COVER 2T	1				
A05		198345-9	CUTTER BLADE 255-2 SET ME	1				
A06		782238-6	BOX WRENCH 17	1				
A07		783202-0	HEX. WRENCH 4	1				
A08		783217-7	HEX. WRENCH 5	1				
A09		1911Y2-9	TRIMMER HEAD 121-M10L SET	1				
A10B		412393-7	BATTERY COVER	2				
A11B		***DC40RA	DC40RA FAST CHARGER	1				
	D10		COMPO-PARTS					
A12B		191L47-8	BATTERY BL4050F SET	2				
A17		831304-7	ACCESSORY BAG	1				

A:UR013GZ02(N)
B:UR013GT203(L)

Interchange
O : Yes
X : No
< : the new part can be substituted for the current.
> : the current part can be substituted for the new.
S : Interchangeable as a set.

