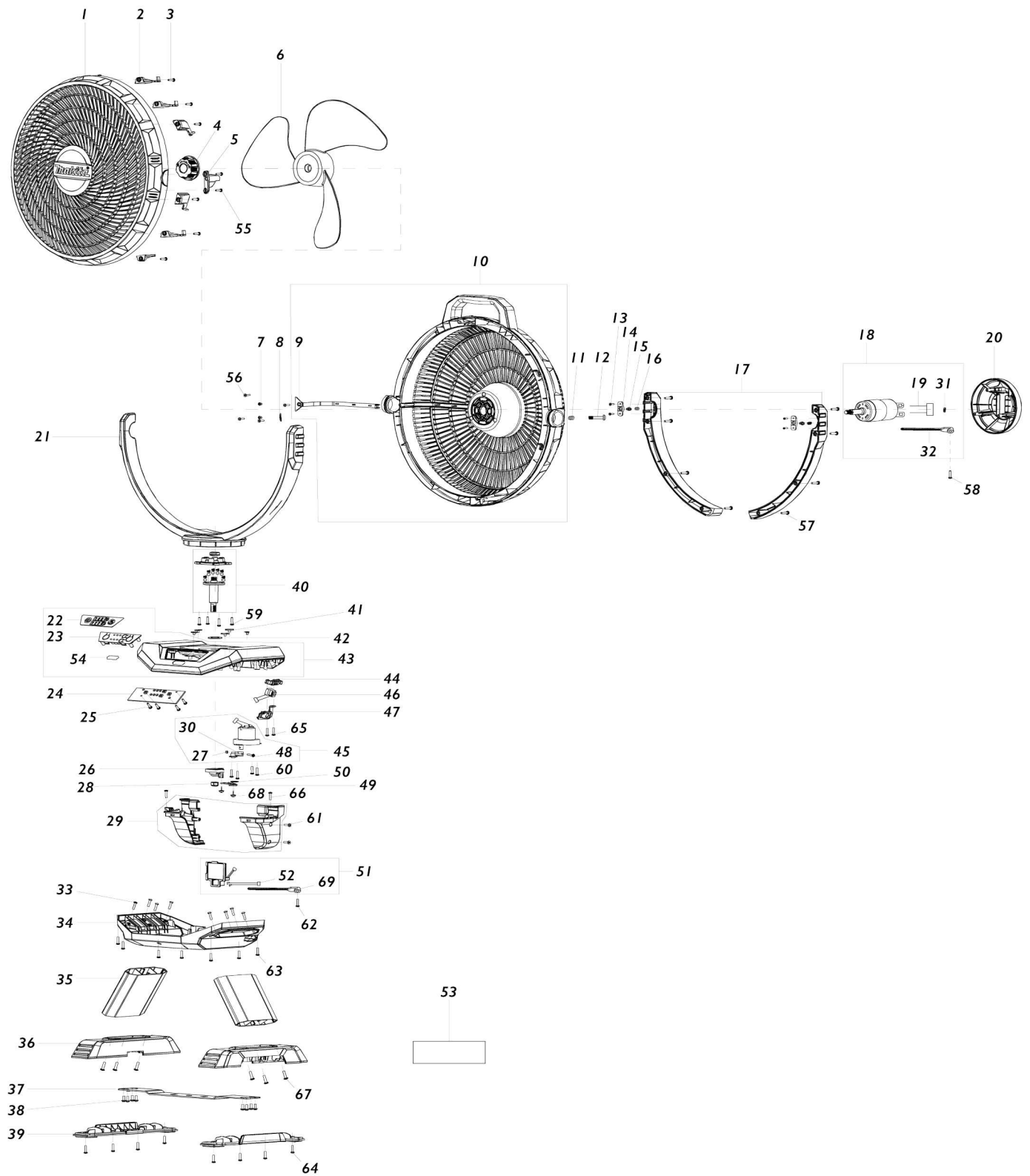


Model No.CF002G CORDLESS FAN



Model No.CF002G CORDLESS FAN

Artículo No.	No. de Partes	Descripción	Intercambialidad	Cantidad	Nuevo/Viejo	Nota 1	Nota 2
001	TE00000573	FRONT COVER		1			
002	TE00000376	SHELL HOOK		6			
003	TE00000028	TAPPING SCREW 3X14		6			
004	TE00000523	BLADE LOCK		1			
005	TE00000362	RELEASE BUTTON		1			
006	TE00000524	FAN BLADE		1	*		
006-1	TE00000702	FAN BLADE	O	1			
007	TE00000525	P.H. SCREW M3X4		2			
008	TE00000558	CIRCLIP		1			
009	TE00000530	WIRE COVER		1			
010	TE00000559	BACK COVER		1			
010		INC. 9					
011	TE00000378	SPRING		1			
012	TE00000364	LOCKED SCREW FOR FRONT HOUSING		1			
013	TE00000203	SELF-TAPPING SCREW 2.5X8 PARA CF100D		4			
014	TE00000189	SMALL GEAR PRESSING PARTS PARA CF100D		2			
015	TE00000190	REPUESTOS PARA POM PARA CF100D		2			
016	TE00000197	RESORTE 1 PARA CF100D		2			
017	TE00000527	BACK COVER OF THE SUPPORT L R		1			
018	TE00000528	MOTOR ASSY		1			
018		INC. 19,31,32					
019	TE00000529	MOTOR CONNECTION WIRE		1			
020	TE00000531	MOTOR REAR COVER		1			
021	TE00000532	STAND		1			
022	TE00000560	SWITCH LABEL		1			
023	TE00000534	SWITCH PANEL		1			
024	TE00000574	PCB		1			
025	TE00000388	SCREW 3X10		4			
026	TE00000274	SHAKE HEAD-POM 1		1			
027	TE00000281	NUT M3		1			
028	TE00000450	NUT M8		1			
029	TE00000575	BATTERY HOUSING		1			
030	TE00000282	SHAKE HEAD-POM 2		1			
031	TE00000537	WIRE SHEATH RUBBER		1			
032	TE00000407	CABLE TIE		1			
033	TE00000538	SCREW M4X8		8			
034	TE00000539	LOWER COVER		1			
035	TE00000576	SUPPORT FOOT		2			
036	TE00000541	FOOT		2			
037	TE00000542	FASTEN IRON PART OF TRIPOD		1			
038	TE00000543	CROSS BELT PAD SCREW M3X10		8			
039	TE00000544	FOOT RUBBER HOUSING		2			
040	TE00000545	PRINCIPAL AXIS		1			
041	TE00000474	PLACA POM P/ CF001G - CF101D		5			

		- DCF102 - DCF203 - DCF300					
042	TE00000546	FLAT WASHER		1			
043	TE00000577	UPPER COVER		1	*		
043		INC. 22,23,54			*		
043-1	TE00000634	UPPER COVER	X	1			
043-1		INC. 22,23,54					
044	TE00000548	CHARGING SOCKET PLUG		1			
045	TE00000561	SUB MOTOR		1			
045		INC. 27,30,48					
046	TE00000549	DC CHARGE BASE		1			
047	TE00000550	ADAPTOR PLATE		1			
048	TE00000102	PHILLIPS HEAD SCREW M3X14		1			
049	TE00000551	SHAKE HEAD-CONNECTION IRO N		1			
050	TE00000552	WASHER		1			
051	TE00000553	TERMINAL ASSY		1			
051		INC. 52,69					
052	TE00000555	BATTERY SOCKET CONNECTION WIRE		1			
053	TE00000585	RATING LABEL		1			
054	TE00000580	XGT LABEL		1			
055	TE00000028	TAPPING SCREW 3X14		2			
056	TE00000028	TAPPING SCREW 3X14		4			
057	TE00000028	TAPPING SCREW 3X14		8			
058	TE00000028	TAPPING SCREW 3X14		1			
059	TE00000028	TAPPING SCREW 3X14		4			
060	TE00000028	TAPPING SCREW 3X14		4			
061	TE00000028	TAPPING SCREW 3X14		2			
062	TE00000028	TAPPING SCREW 3X14		1			
063	TE00000028	TAPPING SCREW 3X14		7			
064	TE00000028	TAPPING SCREW 3X14		8			
065	TE00000388	SCREW 3X10		2			
066	TE00000388	SCREW 3X10		2			
067	TE00000538	SCREW M4X8		6			
068	TE00000543	CROSS BELT PAD SCREW M3X10		2			
069	TE00000407	CABLE TIE		1			
A01	TE00000171	AC ADAPTOR		1			

Por favor declare No. de Partes cuando ordene.

Fecha de Impresión 21/01/2025