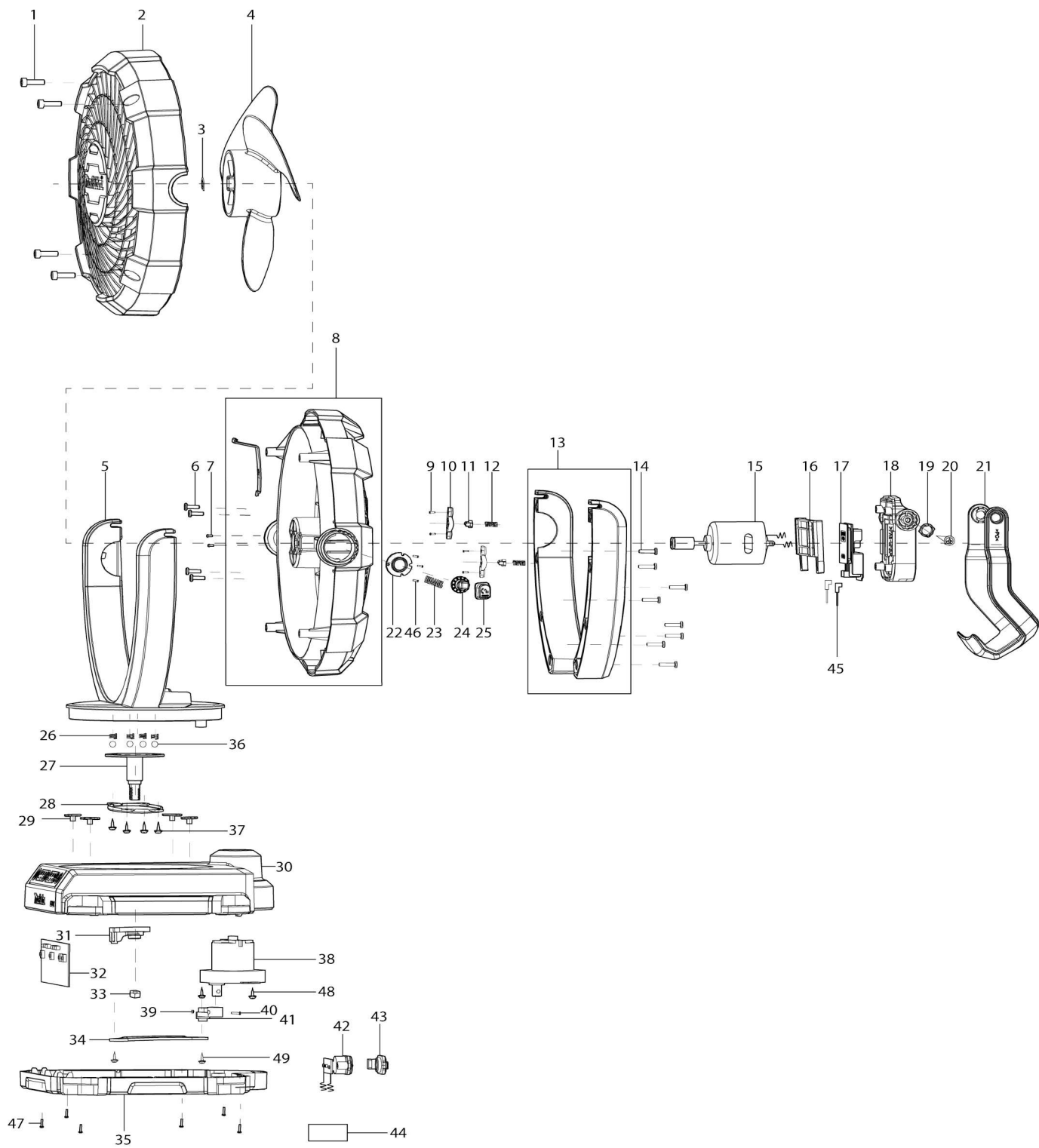


Model No.DCF102 CORDLESS FAN



Model No.DCF102 CORDLESS FAN

Artículo No.	No. de Partes	Descripción	Intercambialidad	Cantidad	Nuevo/Viejo	Nota 1	Nota 2
001	TE00000201	INNER HEXAGON 4X14 PARA CF100D		4			
002	TE00000258	FRONT COVER OF THE BODY		1	*		
002-1	TE00000643	FRONT COVER OF THE BODY	O	1			
003	TE00000199	CIRCLIP PARA CF100D		1			
004	TE00000186	ASPA DEL VENTILADOR PARA CF100D		1	*		
004-1	TE00000698	FAN BLADE	O	1			
005	TE00000259	FRONT COVER OF THE STAND		1			
006	TE00000202	TORNILLO 3X10 PARA CF100D		4			
007	TE00000206	P.H. SCREW M3X5 PARA CF100D		2			
008	TE00000260	BACK COVER OF THE BODY		1			
009	TE00000203	SELF-TAPPING SCREW 2.5X8 PARA CF100D		4			
010	TE00000189	SMALL GEAR PRESSING PARTS PARA CF100D		2			
011	TE00000190	REPUESTOS PARA POM PARA CF100D		2			
012	TE00000197	RESORTE 1 PARA CF100D		2			
013	TE00000261	BACK COVER OF THE SUPPORT		1			
014	TE00000204	TORNILLO 3X14 P/DMP180		8			
015	TE00000262	MOTOR AND LEAD		1	*		
015-1	TE00000510	MOTOR AND LEAD	O	1			
016	TE00000263	CLAMPING PARTS OF BATTERY T OUC		1			
017	TE00000313	TERMINAL		1			
018	TE00000264	THE BATTERY HOUSING		1			
019	TE00000191	POM POSITION PART PARA CF100D		2			
020	TE00000205	CROSS BELT PAD SCREWS 4X10 PARA CF100D		2			
021	TE00000265	HOOK&HANDLE		1			
022	TE00000266	HEAD-LOCK ALUMINUM PARTS1		1			
023	TE00000267	SPRING(LARGE)		1			
024	TE00000268	HEAD-LOCK ALUMINUM PARTS2		1			
025	TE00000269	HEAD-LOCK BUTTON		1			
026	TE00000270	SPRING(MIDDLE)		4			
027	TE00000271	PRINCIPAL AXIS		1	*		
027-1	TE00000684	PRINCIPAL AXIS	S	1			
028	TE00000272	PRESSING/FIXING PART(FOR PRINC)		1	*		
028-1	TE00000686	PRESSING FIXING PART	S	1			
029	TE00000089	POM PLATE		4	*		
029-1	TE00000474	PLACA POM P/ CF001G - CF101D - DCF102 - DCF203 - DCF300	O	4	*		
029-2	TE00000089	POM PLATE	<	4			
030	TE00000273	UP COVER OF THE BASE		1	*		
030-1	TE00000646	UP COVER OF THE BASE	S	1	*		
030-2	TE00000683	UP COVER OF THE BASE	S	1			
031	TE00000274	SHAKE HEAD-POM 1		1	*		

031-1	TE00000685	SHAKE HEAD POM 1	S	1		
032	TE00000275	PCB		1	*	
032-1	TE00000518	PCB	O	1		
033	TE00000276	NUT M8		1	*	
033-1	TE00000687	SCREW M3X8 CROSS ROUND HEAD	S	4		
034	TE00000277	SHAKE HEAD -CONNECTION IRON		1		
035	TE00000278	LOWER COVER OF THE BASE		1		
036	TE00000063	BOLA DE ACERO 6 P/DCF300		4		
037	TE00000279	TAPPING SCREW 3X8		4		
038	TE00000280	SUB MOTOR		1	*	
038-1	TE00000417	SUB MOTOR	O	1		
039	TE00000281	NUT M3		1		
040	TE00000102	PHILLIPS HEAD SCREW M3X14		1		
041	TE00000282	SHAKE HEAD-POM 2		1		
042	TE00000283	FIXED PART OF DC BASE		1		
043	TE00000192	CHARGING SOCKET PLUG PARA CF100D		1		
044	TE00000312	RAITING LABEL		1		
045	TE00000284	LEAD WITH INSERTING PIECE		2	*	
045-1	TE00000511	LEAD WITH INSERTING PIECE SET	O	2	*	
045-2	TE00000511	LEAD WITH INSERTING PIECE SET	O	1		
046	TE00000203	SELF-TAPPING SCREW 2.5X8 PARA CF100D		3		
047	TE00000204	TORNILLO 3X14 P/DMP180		6		
048	TE00000279	TAPPING SCREW 3X8		2		
049	TE00000279	TAPPING SCREW 3X8		2		
050	TE00000317	SWITCH LABEL		1	*	
050-1	TE00000647	SWITCH LABEL	S	1		
051	TE00000515	GROMMET		1	*	
051-1	TE00000537	WIRE SHEATH RUBBER	O	1	*	
052	TE00000418	CABLE TIE		1		
053	TE00000204	TORNILLO 3X14 P/DMP180		1		
054	TE00000682	STRUCTURAL COMPONENT		1		
054		INC.27,28,30,31,33,52,55				
055	TE00000681	PVC TUBE	S	1		

Por favor declare No. de Partes cuando ordene.

Fecha de Impresión 21/01/2025