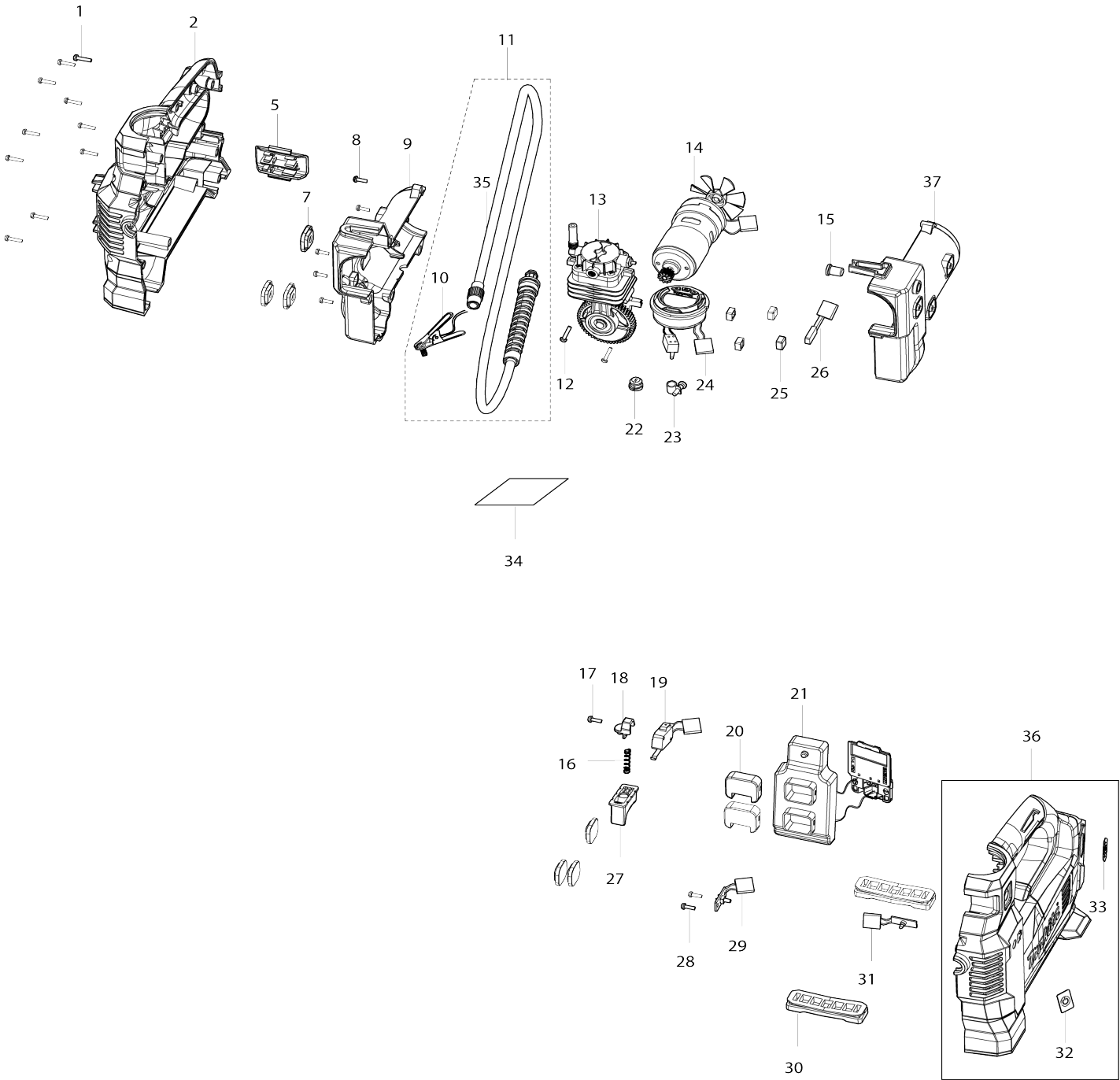


Model No.MP001G CORDLESS INFLATOR



Model No.MP001G CORDLESS INFLATOR

Artículo No.	No. de Partes	Descripción	Intercambialidad	Cantidad	Nuevo/Viejo	Nota 1	Nota 2
001	TE00000028	TAPPING SCREW 3X14		10			
002	TE000000591	HOUSING SET		1			
002		INC. 32,33,36			*		
002		INC. 36					
005	TE000000593	FIXED BRACKET		1			
007	TE000000595	INNER PAD		6			
008	TE000000029	TAPPING SCREW 3X10		5			
009	TE000000596	INNER HOUSING SET		1			
009		INC. 37					
010	TE000000597	BRITISH ADAPTER		1			
011	TE000000598	HOSE ASSEMBLY		1			
011		INC. 10					
012	TE000000624	SCREW 4X6		2			
013	TE000000625	CYLINDER COMPLETE		1			
014	TE000000599	MOTOR ASSEMBLY		1			
015	TE000000600	RELEASE VALVE BUTTON		1			
016	TE000000330	RESORTE P/DMP180		1			
017	TE000000029	TAPPING SCREW 3X10		1			
018	TE000000328	GATILLO DE RESORTE P/DMP180		1			
019	TE000000601	SWITCH		1	*		
019-1	TE000000601	SWITCH	O	1			
020	TE000000602	PLATE		2			
021	TE000000603	CONTROLLER ASSY		1	*		
021-1	TE000000694	CONTROLLER ASSY	<	1			
022	TE000000604	PLUG		1			
023	TE000000352	ABRAZADERA P/DMP180		1			
024	TE000000605	DIGITAL DISPLAY		1			
025	TE000000606	PAD		4			
026	TE000000607	THERMAL PROTECTOR		1			
027	TE000000485	SWITCH		1			
028	TE000000029	TAPPING SCREW 3X10		2			
029	TE000000608	POWER SWITCH		1			
030	TE000000609	MAT		2			
031	TE000000610	LED CIRCUIT		1	*		
031-1	TE000000837	LED CIRCUIT	O	1			
032	TE000000426	SWITCH LABEL		1			
033	TE000000611	XGT LABEL		1			
034	TE000000612	NAME PLATE		1			
036	TE000000591	HOUSING SET		1			
036		INC. 2,32,33			*		
036		INC. 2					
037	TE000000596	INNER HOUSING SET		1			
037		INC. 9					
038	TE000000850	SPRING		1			
A01	TE000000592	BALL ADAPTER		1			
A02	TE000000333	ADAPTADOR DE ANILLO DE NATACION		1			
A03	TE000000594	FRENCH ADAPTER		1			

F01	TE00000691	AIR CHUCK		1			
F02	TE00000796	AIR CHUCK		1			

Por favor declare No. de Partes cuando ordene.

Fecha de Impresión 21/01/2025